



Country Profile

The organisation of Food Safety,
Animal Health, Animal Welfare and
Plant Health Control Systems

Lithuania



TABLE OF CONTENTS

INTRODUCTION	3
SUMMARY	4
1. ARRANGEMENTS FOR THE IMPLEMENTATION OF CERTAIN REQUIREMENTS OF REGULATION (EC) N° 882/2004.....	5
Designation of Competent Authorities.....	5
Co-ordination within Competent Authorities.....	10
Resources for performance of controls.....	10
Organisation and implementation of official control	11
Multi-annual National Control Plan (MANCP)	15
Annual Report (AR)	15
2. COMPETENT AUTHORITIES AND DISTRIBUTION OF RESPONSIBILITIES IN RELATION TO INDIVIDUAL CONTROL SYSTEMS	17
2.1. Control system for animal health.....	17
2.2. Control system for food of animal origin	20
2.3. Control system for imports of animals and food of animal origin	23
2.4. Control system for feeding stuffs and animal nutrition.....	25
2.5. Control system for TSE and Animal By-Products (ABP).....	27
2.6. Control system for veterinary medicinal products and residues.....	31
2.7. Control system for food of plant origin and general food hygiene	35
2.8. Control system for imports of food of plant origin	39
2.9. Control system for plant protection products (PPP) and residues	41
2.10. Control system for animal welfare	45
2.11. Control system for plant health	47
ANNEX I - STAFF RESOURCES	50
ANNEX II – ACRONYMS, ABBREVIATIONS AND SPECIAL TERMS	51

INTRODUCTION

This overview has been drawn up by the Food and Veterinary Office (FVO), a Directorate of the Directorate-General for Health and Consumers of the European Commission based on information supplied by Lithuania.

The aim is to present, in summary form, the latest information on how control systems for food and feed safety, animal health, animal welfare and plant health are organised in Lithuania.

Chapter 1 describes the overall organisation of the Lithuanian authorities and the respective responsibilities of the ministries and government agencies in relation to the different components of the control system. A chart is used to help the reader better understand the inter-relationships between the responsibilities of the different bodies.

Chapter 2 gives a more detailed description of the main responsibilities for each of the eleven separate systems that form the complete range of control systems in Lithuania, covering the whole chain of plant, animal and food production. As in Chapter 1, organisation charts are used to help the reader.

Annex I provides details on the number of control staff in Lithuania. The statistics on staff resources have been provided by the Lithuanian authorities on a non-standardised basis.

The overview was updated following the most recent general follow-up mission in November 2010 and will be updated at regular intervals based on relevant information received by the Commission from the Lithuanian authorities.

Acronyms are used extensively throughout this overview for the sake of brevity. A list of acronyms, abbreviations and special terms is given in Annex II as a guide for the reader.

SUMMARY

In Lithuania, the State Food and Veterinary Service (SFVS) is the Central Competent Authority with overall responsibilities in relation to food and feed safety, animal health and animal welfare. The SFVS is directly accountable to the Ministry of Agriculture. The State Plant Service (SPS) under the Ministry of Agriculture is the Central Competent Authority for plant health authorisation and controls on the use and marketing of plant protection products. Both authorities have policy, supervision and co-ordination functions. The SFVS and the SPS were reorganised on 1 July 2010 and some organisational changes and new division of competences within and between the competent authorities took place with the aim to further optimise and improve the official controls of food and feed safety, animal health and animal welfare and plant health.

The official controls are implemented by territorial services at County, City and District level. The territorial services report directly to the SFVS and SPS respectively.

The following authorities are also responsible for some aspects of the control systems:

the Ministry of Agriculture is responsible for establishing the requirements for quality and composition of food, raw materials, cultivation of plants for human consumption, organic food and animal husbandry; the Ministry of Health is responsible for legislation on contaminants, food additives, novel foods and GMOs in food and packaging materials; the Ministry of Economy is responsible for legislation on labelling of foodstuffs; the Ministry of Environment is the CCA for GMOs (Genetically Modified Organisms); the State Plant Service under the Ministry of Agriculture is also responsible for registration of economic entities producing grains for feed and controls on cultivation of GMOs; the Agriculture Information and Rural Business Development Centre (AIRBDC), a State Enterprise under the Ministry of Agriculture, is responsible for the development and maintenance of the main agricultural registers and databases; the public enterprise "Ekoagros" is responsible for certification and control of organic farming businesses. A new Government initiative on "Optimisation of official control across agencies" (between the MH, MEC, MA, MI, MF and the MJ) has commenced and new co-operation agreements between different CAs were adopted (Customs, Agency of Environment Protection, Police Department, State Plant Service).

A total of 1,950 full time equivalents (FTE) staff are involved in controls on food safety, animal and plant health and animal welfare in the relevant control bodies. Statistics on staff resources at the SFVS and the SPS are provided under Chapter 1 and in Annex I.

Lithuania has developed a Multi-Annual National Control Plan for 2010-2012 published on the following link <http://vmvt.lt/lt/top/veikla/planavimo.dokumentai/>.

The Annual Report for 2009 was provided to the Commission in April 2010.

1. ARRANGEMENTS FOR THE IMPLEMENTATION OF CERTAIN REQUIREMENTS OF REGULATION (EC) N° 882/2004

Designation of Competent Authorities

In Lithuania, the State Food and Veterinary Service (SFVS) is the Central Competent Authority with overall responsibilities in relation to food and feed safety, animal health and animal welfare.

The State Plant Service is the Central Competent Authority for plant health and for authorisation and controls on the use and marketing of plant protection products.

Both authorities were reorganised on 1 July 2010 and have policy, supervision and co-ordination functions.

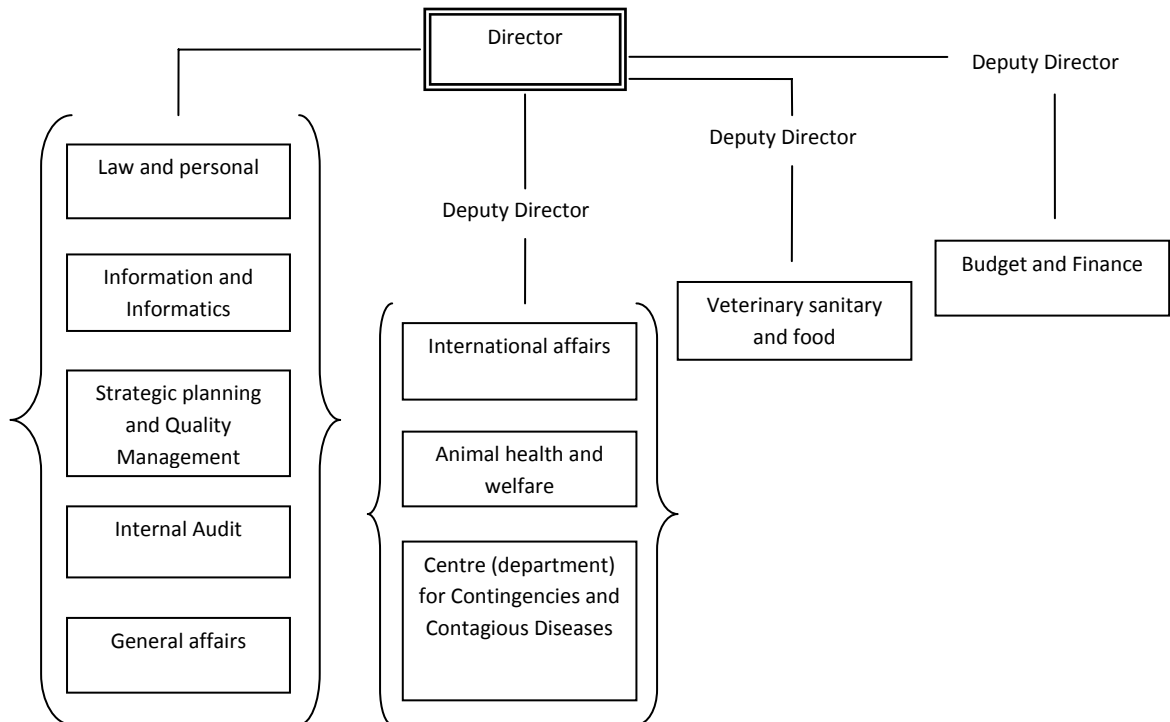
Official controls are implemented by the territorial services at County, City and District level. The territorial services report directly to the SFVS and SPS respectively.

The following authorities are also responsible for some aspects of the control systems:

- the Ministry of Agriculture (MA) is responsible for establishing the requirements for quality and composition of food, raw materials, cultivation of plants for human consumption, organic food and animal husbandry;
- the Ministry of Environment (MEN) is the CCA for GMOs (Genetically Modified Organisms);
- the Ministry of Health (MH) is responsible for legislation on contaminants, food additives, novel foods and GMOs in food and packaging materials;
- the Ministry of Economy (MEC) is responsible for legislation on labelling of foodstuffs;
- the State Plant Service (SPS) under the Ministry of Agriculture is also responsible for registration of economic entities producing grains for feed and controls on cultivation of GMOs ;
- the Agriculture Information and Rural Business Development Centre (AIRBDC), a State Enterprise under the Ministry of Agriculture, is responsible for the development and maintenance of the main agricultural registers and databases (animal, farms, crops);
- the public enterprise "Ekoagros" is responsible for certification and control of organic farming businesses.

State Food and Veterinary Service

The State Food and Veterinary Service (SFVS) is a government institution. It was reorganised on 1 July 2010, becoming directly accountable to the Ministry of Agriculture with the following structure:



The reorganisation process aimed to simplify the regulation and decision process, and to further optimise and improve the official controls of food and feed safety, animal health and animal welfare. Some organisational changes and new division of competences within and between the competent authorities took place.

As regards the SFVS organisation, four departments were merged and 2 new bodies were created:

- the Veterinary Sanitary and Food Department took over the roles formerly carried out by the Veterinary (Sanitary) Public Health Department (VPHD) and the Food Department (FD);
- the Strategic Planning and Quality Management Department took over the roles formerly carried out by the Strategic Planning Department and the Risk and Quality Management Department.

The SFVS headquarters now consists of 10 departments:

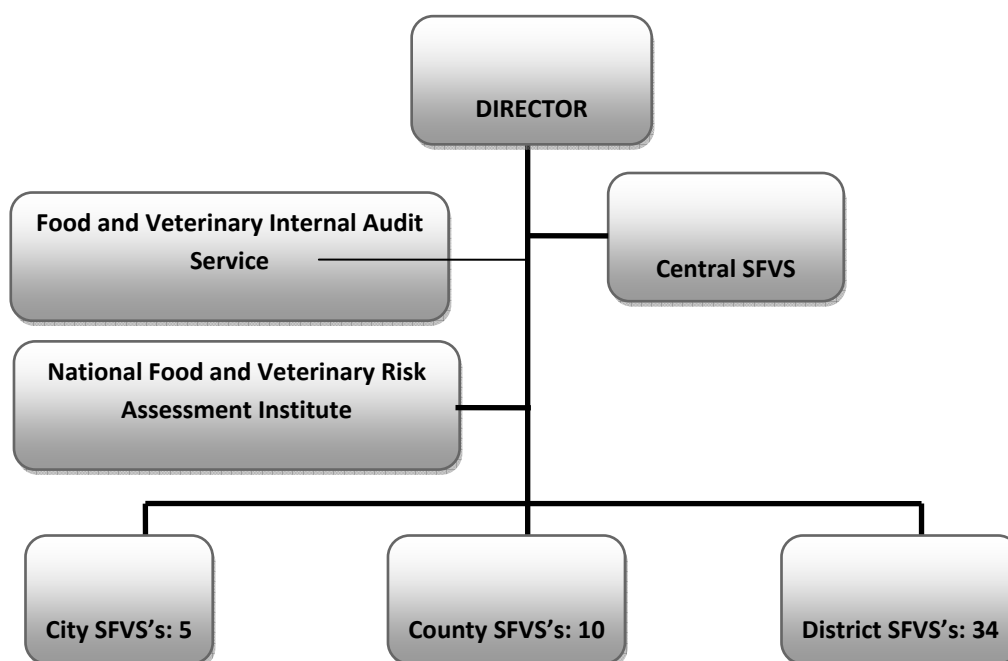
- Law and Personnel
- Information and Informatics / IT Department (ITD)
- Strategic Planning and Quality Management Department (SPD)
- Internal Audit Department (IAD)

- General Affairs Department (GD)
- International Affairs Department (IAD)
- Animal Health and Welfare Department (AHWD)
- Centre (department) for Contingencies and Contagious Diseases (CCCD)
- Veterinary Sanitary and Food Department (FD)
- Finance and Budget Department (FBD)

The SFVS has a pyramidal structure with a direct line of command between central and local level.

At territorial level, the SFVS comprises:

- 10 County State Food and Veterinary Services;
- 5 City State Food and Veterinary Services (in Vilnius, Kaunas, Klaipeda, Druskininkai and Palanga);
- 34 District State Food and Veterinary Services.



The City, District, and County services have combined responsibilities: control; planning; and enforcement of legislation. The central SFVS staff meet with the territorial services between one and four times per year, minutes are published and presentations are posted on the intranet.

The County SFVS perform HACCP audits in food operators which are located in District SFVS territories. City, County and District SFVS are audited by the Food and Veterinary Internal Audit Service.

According to Quality Manual procedures, the SFVS Strategic Planning and Quality Management Department performs internal audits with the FVIAS. The County SFVS help and support District SFVS in their internal evaluation of the Quality Management (QM) System.

A description of bodies subordinated to the SFVS is provided in the MANCP 2010-2012.

State Plant Service

The State Plant Service (SPS) is a government institution under the authority of the Ministry of Agriculture.

it was reorganised into three state services on 1 July 2010:

- State Plant Protection Service
- State Seed and Grain Service
- Lithuanian State Plant Varieties Testing Centre

The State Plant Protection Service consists of the following divisions:

- Phytosanitary Division (PD)
- Plant Protection Products Registration Division (PPPRD)
- Plant Protection Products Control Division (PPPCD)

Within the SPS, the Phytosanitary Diagnostic and Quality Testing Division (PDQTD) has three laboratory services:

- Phytosanitary Diagnostic Subdivision
- Seed Quality Testing Subdivision
- Grain Testing Subdivision

The Phytosanitary Division is responsible for the official control of plant health, while the Plant Protection Products Registration Division is responsible for the authorisation of plant protection products (PPP) and the Plant Protection Products Control Division for the official control of the marketing and use of PPP.

At local level, the SPS is structured into 10 Regional Divisions (RDs), and 8 Border Phytosanitary Control Posts (BPCPs). The activities of the RDs' services are co-ordinated by the Headquarters of the SPS and the BPCPs are within the structure of the Phytosanitary Division.

In the largest counties, in addition to the territorial offices, there are 22 specialists responsible for controlling the marketing and use of plant protection products. The activities of these specialists are co-ordinated by the Plant Protection Products Control Division of the SPS.

National Food and Veterinary Risk Assessment Institute

From 1 July 2008, the NFVRAI took over the responsibilities of the National Veterinary Laboratory. The NVL, under the SFVS, was the main public laboratory performing official analyses in the foodstuffs and veterinary area. The former NVL has acquired the status of department within the NFVRAI and retains all its previous responsibilities.

It has a central laboratory in Vilnius and three branches in Kaunas, Panevezys and Siauliai, together employing 275 staff. The central laboratory consists of an administration and 3 departments: Risk Assessment, Common Affairs and Laboratory.

The NFVRAI is accredited to ISO 17025 by Deutsches Akkreditierungsstelle GmbH (German Accreditation Body) and by the Russian Federation according to the GOST-R and Hygiene systems. The Vilnius site has been granted flexible scope of accreditation.

The NFVRAI provides diagnostic and scientific support to the SVFS. The Risk Assessment Department is responsible for risk assessment and risk communication in relation to food and feed safety, epidemiological analysis of animal diseases, evaluation of the risks related with the introduction of animal diseases into the country, evaluation of the safety and effectiveness of veterinary medicines and veterinary biocides and provides support and recommendations on minimising the effect of risk factors on the safety of food, animal health and welfare and the environment.

All laboratory activities for official control purposes are performed only by the National Food and Veterinary Risk Assessment Institute, its branches and the Laboratory of Klaipeda County. Guidelines for the accreditation of laboratories performing official control in slaughterhouses will be prepared by the National Food and Veterinary Risk Assessment Institute in the first quarter of 2011. The institute will also modify the quality system procedure related to the subcontracting of laboratories (audit of such laboratories, collection of all relevant information) in the same timeframe.

Laboratory network:

Klaipeda County State Food and Veterinary Laboratory

The Klaipeda County State Food and Veterinary Laboratory operates within the Klaipeda County State Food and Veterinary Service. It is the main public laboratory performing official analysis in the foodstuff and veterinary area in the Western part of Lithuania.

The laboratory is accredited to ISO 17025 by Deutsches Akkreditierungssystem Prüfwesen GmbH.

Attached to the County offices there are 1 accredited and 4 non-accredited small laboratories that perform analyses for the establishments' own checks and screening for animal health (primarily Rabies).

Phytosanitary Diagnostic Subdivision (PDS)

The Phytosanitary Diagnostic Subdivision, based in Vilnius, is a subdivision of the Phytosanitary Diagnostic and Quality Testing Division of the SPS. The Phytosanitary Diagnostic Subdivision provides full diagnostic and scientific support to the SPS. It is responsible for conducting phytosanitary testing of imported plants and plants of domestic origin, plant products, soil, training and instructing staff of the SPS, carrying out testing for quality and quarantine organisms in certified seed potatoes, carrying out research and development on plant health related issues.

The laboratory has started to establish a Quality Assurance System with a view to obtaining an accreditation for the testing of potato ring rot and brown rot in 2011.

There are no private laboratories involved in phytosanitary matters in Lithuania, although the Institute of Botany provides transmission electron microscopy facilities for virology and the Institute of Ecology provides pheromone and light traps.

Co-ordination and Co-operation between Competent Authorities

Overall the co-ordination and co-operation between different competent authorities is ensured through formal agreements, regular meetings and joint activities.

A new Government initiative on "Optimisation of official control across agencies" (between the MH, MEC, MA, MI, MF and the MJ) has commenced and new co-operation agreements between different CAs were adopted (Customs, Agency of the Environment Protection, Police Department, and State Plant Service).

Co-ordination within Competent Authorities

Work instructions are in place as part of the SFVS Quality Management System (QMS) to provide arrangements for co-operation between the SFVS headquarters and its territorial units.

The work instructions on management of internal information aimed at describing the actions of civil servants and contractual employees of SFVS, covers the transmission, analysis and administration of information.

Systems of reporting are in place between the different levels of the SFVS. There is a computer based system in place for the control reports, facilitating headquarters in the monitoring of inspection activities at county and district level.

Resources for performance of controls

State Food and Veterinary Service

The Veterinary Law and SFVS Orders establish the duties and rights of the CA, its agents and the operators of the businesses that it supervises.

The CAs have the power to approve, and suspend the approval of, certain businesses, the right to access registered and approved business premises for official purposes and the power to impose measures.

Officials working within the CCA are bound by the Law on the Civil Service, which prevents them from conducting private business within their fields of responsibility; Authorised Veterinarians typically perform official tasks on holdings where they also perform private practice. They are required to sign a formal agreement annually with the CA, which specifies the rights and duties of both parties.

Staff resources

The total number of staff of the SFVS is 1,695. Of these, 103 are based at headquarters and 1,592 in the territorial services and subordinate institutions of the SFVS.

At territorial level there are 257 inspectors dealing with food of animal origin, 237 with animal health, TSEs (Transmissible Spongiform Encephalopathy) and animal welfare, 182 with food of non animal origin, pesticides and imports of food of plant origin and 133 with import controls of animals and food of animal origin.

Training

In line with the procedures under the SFVS quality system, an annual SFVS training programme is prepared at central level and approved by a SVSF Director's Order. Based on this, the annual training programmes are prepared in County SFVS and approved by their Directors.

In 2009, specialists took part in about 92 different training activities attended by 1,188 staff from central and regional level. 49 staff attended 9 courses organised by DG SANCO.

State Plant Service

Staff resources

The SPS has a total of 259 professional staff. Of these, 78 specialists are employed in the 10 Regional Divisions and a further 41 specialists are based in the Border Phytosanitary Control Posts.

Training

The SPS has an annual training programme, which is to be carried out according to the training plan established 1 year in advance.

The Plant Protection Products Control Division specialists usually have 8 training events per year:

- the seminars usually cover updates for the control of plant protection products packaging, labelling, trade, storage and use (target group – specialists of the Plant Protection Products Control Division);
- the national and international training visits and seminars on field sprayer control, plant protection products post-registration control issues and their implementation (target group – specialists of Plant Protection Products Control Division).

The Phytosanitary Division organised 3 training sessions for specialists and 12 training sessions for growers and other institutions last year.

National Food and Veterinary Risk Assessment Institute

Staff resources

The largest sector is the laboratory department with 204 staff: 44 in chemistry; 7 in radiology; 17 in food microbiology; 9 in GMO, 13 in bacteriology, 9 in pathology, 13 in serology, 12 in virology unit, 31 staff in the Kaunas branch laboratories, 26 staff in the Panevėžys branch laboratories, 23 staff in the Šiauliai branch laboratories. A further 70 staff in other departments and units, are indirectly related to laboratory investigations.

Phytosanitary Diagnostic Subdivision (PDS)

Staff resources

The PDS employs the subdivision head, 6 chief specialists, 4 senior specialists and 10 specialists.

Organisation and implementation of official control

The State Food and Veterinary Service generally organises official controls on the basis of the multi-annual control plan. Controls not included in the programme may be undertaken for the purpose of complaints, official reports on infringements.

In addition, in January of each year the Strategic Planning and Quality Management Department draws up the strategic plan of activities of SFVS. The long-term strategic goals and the priority tasks are established, the parameters for evaluation of the implementation

of the plan are indicated for each sector of the official controls. After the plan is approved by the SFVS, each subordinate institution has to draw up its own annual activity plan with an indication of the specific actions for the implementation of strategic goals and tasks. At the end of each year, the territorial SFVS submit reports to the central SFVS on the implementation of the plan. The SFVS expect to associate future MANCP versions with their annual plans.

The MANCP describes the procedures followed to set the frequency of inspections carried out and to establish the annual control plan (provided in Chapter 3 of the 2010 - 2012 MANCP).

Enforcement measures

State Food and Veterinary Service

The administrative code of Lithuania provides for a range of sanctions including warnings, penalties and withdrawal of licences. It involves four areas (veterinary public health and veterinary controls, food inspection, animal identification/registration and animal welfare). Specific provisions are also foreseen in the specific legal acts where legal powers are prescribed concerning suspension of operations or closure of establishments.

Within the framework of the QMS, there is a SOP in place, KT-1-2, "Imposing of administrative penalties under the administrative code" that explains procedures to impose enforcement measures in the case of non-compliance.

The maximum sanction of administrative penalties is 5,000 LTL.

Parliament has the power to amend the administrative code and sanctions if these are found to be inadequate.

Verification and review of official controls

In 2004, the SFVS launched the implementation of the Quality Management System in accordance with the requirements of International Standard ISO 17020:2004 "General criteria for the operation of various types of bodies performing inspection". The Quality Management System is described in the MANCP 2010-2012. The QMS in place in the SVFS provides it with tools for the verification of the effectiveness of official controls, such as checks on inspection reports available on the intranet, reporting, appraisal systems and audit reports and ensuring impartiality, consistency and quality of official controls.

In addition, the Veterinary Information Management System (VIMS) facilitates the verification of the effectiveness of official controls. VIMS was upgraded in 2009 and by the end of 2012, the SFVS plans to finalise the integration of information systems of the SFVS and other related bodies. A detailed description on VIMS and its upgrades are provided in the 2009 Annual Report and the 2010-2012 MANCP.

Once a year, the SFVS perform internal audits of the quality system and once every four years evaluate the competences of the officials.

Internal audits include the evaluation of the impartiality, quality, consistency, adequacy of the number and qualifications of the staff, the suitability of premises and equipment, co-operation, provision and management of information, implementation of quality procedures, imposition of sanctions, management of control records and archives. Meetings are held on the identified issues in different sectors of activities or on

uncertainties in the application of legislation and, decisions are taken on the amendment or withdrawal of legislation, on the preparation of explanatory notes or on the development of a quality system document.

At the territorial SFVS, performance of the official food and veterinary control is conducted at least once per trimester by the chief of the service, or his deputy chief or the head of the respective department. The scope of the evaluation is the management of documents, assessment of the filling of documents, performance of the official food and veterinary control. The assessment of results is discussed during the next meeting and is registered. At the end of the year these results will be taken into account during the annual appraisal of the civil servants. Appraisal of staff competences must be done every four years by the Strategic Planning and Quality Management Department of the SFVS.

Audit system

Audits according to Article 4 (6) of Regulation (EC) No. 882/2004

Responsibility for the carrying out of audits according to Article 4 (6) of Regulation (EC) No. 882/2004 lies within the Food and Veterinary Internal Audit Service (FVIAS).

The Food and Veterinary Internal Audit Service (FVIAS) was established by the SFVS in May 2007 after reorganisation of the pre-existing Food and Veterinary Audit Service. This office comprises three departments: the food control department, the veterinary and border control department and the department on general affairs. FVIAS currently employs 16 staff of whom eight are auditors.

FVIAS activities are planned by drawing up a national action plan, which is approved by SFVS director. The annual plan may be amended to take account of proposals of the SFVS director, new SFVS priorities etc. In accordance with Decision 2006/677/EC, each process of internal audit starts with the internal audit planning, which is finalised in the internal audit programme.

Audits are conducted on a risk based approach and on the basis of the single integrated multi-annual national control plan, which results in an annual audit programme.

In performing of each internal audit, questionnaires and audit plans are drawn up by the internal auditor. Questionnaires are sent to auditees two weeks in advance of the audit. Audits last 3 to 5 days and usually consists of a team of two auditors. The audit consists of desk-based procedures and accompanied inspections or visits if deemed necessary. Following the audit, a report is drafted and sent to the auditees for comment. The final report is then produced and the report contains recommendations, some general, and some specific to certain auditees. They have a two week deadline for producing an action plan. Follow-up is also carried out in 2 to 3 months and may require re-visiting if necessary.

During an internal audit, territorial services are checked to determine if they comply with the implementing provisions of Regulation (EC) No. 882/2004 and with the single integrated multi-annual national control plan.

The following table provides an overview of audits carried out by FVIAS since January 2007 (detailed on the audits carried out in 2009 are provided in the AR 2009).

	AH	FAO	IFAO	Feed/AN	TSE/ABP	VMP/R	GH	IPO	PPP	AW	PH
2007	-	1	2	-	-	-	1	-	-	-	-
2008	-	-	2	-	1	-	3	-	-	1	-
2009	-	2	-	-	-	1	2	-	1	1	-
2010	-	1	1	1	-	1	1	1	-	1	-

In order to strengthen the audit and to make it more effective, the SFVS has planned to revise the following in 2011:

- the structure of the FVIAS;
- the training of the staff of the FVIAS;
- to perform joint audits together with the specialists of the headquarters of the SFVS (specialists relevant to the sector being audited);
- the standard operating procedure of the quality system KS-2-1 and the working instruction KS-2-1-D1 in order to improve implementation of the audit process (by 1 July 2011).

External audits

The SFVS as an inspection body is partially accredited to DIN EN ISO/IEC 17020:2004 by Deutsches Akkreditierungsstelle GmbH (German Accreditation Body). In order to get accreditation the SFVS signed a contract in 2005 with the German Accreditation Body. According to this, the GAB conducts external audits on the effectiveness of the SFVS QMS, document management and the competences of inspectors each year following the requirements of the international standard ISO 17020:2004 "General criteria for the operation of various types of bodies performing inspection". From 2006 to 2010, 10 County, 5 City SFVS and 8 Border Inspection Posts (BIP) were accredited. The remaining non-accredited BIPs, control of production of food of non-animal origin, drinking water and veterinary medicinal products are foreseen to receive accreditation in 2012.

The SPS is currently developing a system of audit.

The plan of the activities of the SPHS for 2011 will include an inspection of the activities of two PHC on the performance of direct control on the safety of public health in the establishments manufacturing materials and articles intended to come into contact with food.

National accreditation bodies

The Lithuanian National Accreditation Bureau (LA) under the Ministry of Environment (MEN) accredits testing and calibration laboratories, certification bodies for products, quality and environmental management systems and persons and inspection bodies.

The LA also assesses certification and inspection bodies and testing laboratories proposed by authorised institutions.

The LA is a full member of the European co-operation for Accreditation (EA) since 1999, participates in activities of the relevant Committees of this organisation. LA became a signatory of the EA MLAs in the fields of testing and calibration laboratories and product certification bodies on 16 November 2001; in the fields of inspection bodies, certification bodies for quality and environmental management systems and persons on 17 November 2005.

Multi-annual National Control Plan (MANCP)

Lithuania first developed its Multi-Annual National Control Plan (MANCP) for 2007-2009. It was subsequently updated in February 2008 (version II) and March 2009 (version III).

The MANCP of the control bodies of the Republic of Lithuania includes strategic targets of the control bodies. The plan has been drawn up on the basis of requirements and recommendations of Regulation (EC) No. 882/2004 of the European Parliament and of the Council of 29 April 2004 on official controls performed to ensure the verification of compliance with feed and food law, animal health and animal welfare rules.

An updated MANCP for the period 2010 - 2012 was received by FVO in April 2010.

The plan is published and can be found at the following link: <http://vmvt.lt/uploads/file/Binder1.pdf>.

New amendments to the MANCP are being expected to be sent to the Commission during the first quarter of 2011.

Annual Report (AR)

The annual report on the implementation of the plan in 2009 was provided to the Commission in April 2010.

In 2009, overall 69,500 inspections were carried out and 5,321 administrative penalties and fines were imposed (about 499,000 LTL).

Overview of responsibilities of competent authorities

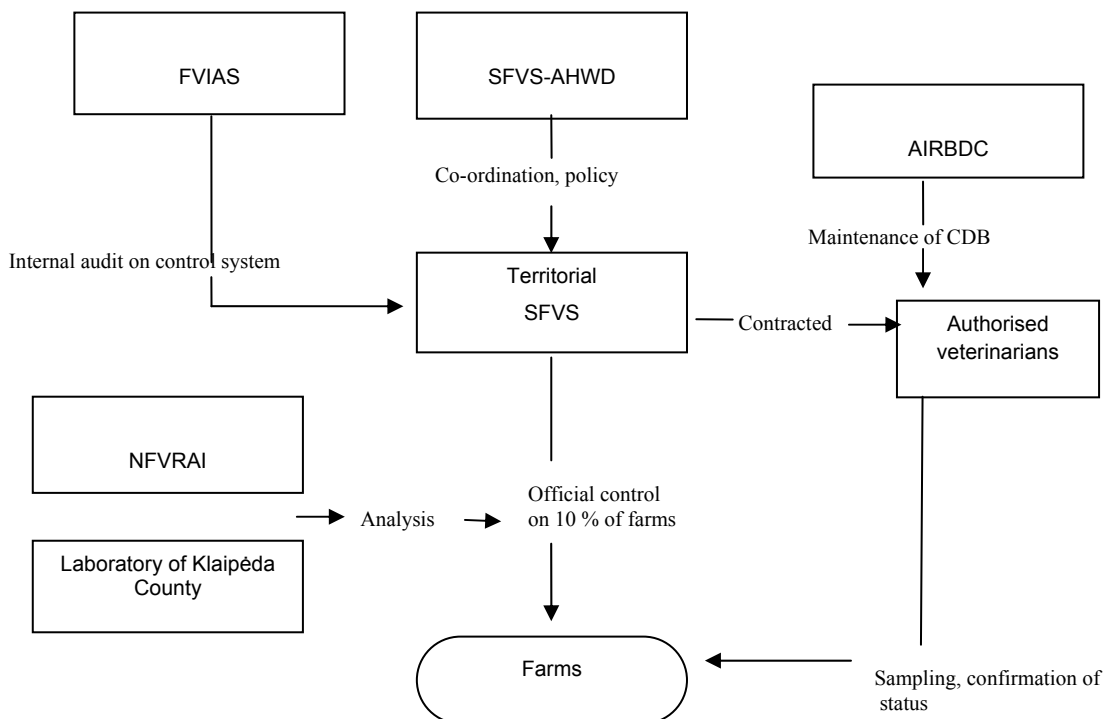
The following chart gives an overview of the distribution of responsibilities in relation to control systems and operational levels.

Sector	Policy co-ordination	Co-ordination of controls	Implementation of controls	Laboratories	Risk assessment, scientific advice
1. Animal Health	SFVS	SFVS-AHWD	Territorial SFVS-	NFVRAI	SFVS
2. Food of Animal Origin	SFVS	SFVS-VPHD	Territorial SFVS-	NFVRAI	SFVS
3. Imports of animal and food of animal origin	SFVS	SFVS-IAD	County FVS, City FVS	NFVRAI	SFVS
4. Feedingstuffs and animal nutrition	SFVS	SFVS-AHWD	Territorial SFVS-	NFVRAI	SFVS
5. TSEs/ABP	SFVS	SFVS-AHWD	Territorial SFVS-	NFVRAI	SFVS
6. Veterinary medicines - authorisation, marketing & distribution	SFVS	SFVS-AHWD	NFVRAI	NFVRAI	SFVS
Veterinary medicines - residues	SFVS	SFVS-AHWD	County FVS, City FVS	NFVRAI	SFVS
7. Foodstuffs and Food hygiene	SFVS	SFVS-FD	Territorial SFVS	NFVRAI	SFVS
8. Imports of food of plant origin	SFVS	SFVS-FD	Territorial SFVS	NFVRAI PDS	SFVS SPS
9. Plant protection products - authorisation, marketing and use	MA	SPS	SPS	PDS	SPS
Plant protection products - residues	MA	SPS	SPS	PDS	SPS
10. Animal Welfare	SFVS	SFVS-AHWD	Territorial SFVS	NFVRAI	SFVS
11. Plant Health	MA	SPS	SPS, BPCPs of SPS	PDS	SPS

More detailed descriptions of the allocation of responsibilities between authorities in relation to each control system are given in the following chapters.

2. COMPETENT AUTHORITIES AND DISTRIBUTION OF RESPONSIBILITIES IN RELATION TO INDIVIDUAL CONTROL SYSTEMS

2.1. Control system for animal health



AIRBDC	Agriculture and Rural Business Development Centre
CDB	Farming Animal Registry Data Base
FVIAS	Food and Veterinary Internal Audit Service
NfVRAI	National Food and Veterinary Risk Assessment Institute
SFVS-AHWD	State Food and Veterinary Service Animal Health and Welfare Department
Territorial SFVS	City, County and District State Food and Veterinary Services

Competent Authorities

The central competent authority for animal health is the State Food and Veterinary Service (SFVS). Within it, all responsibilities for animal health fall under the Animal Health and Welfare Department. Official controls are carried out by official veterinarians working in the territorial services of the SFVS. They are audited by the FVIAS.

Inspectors from the Ministry of the Environment working in hunting areas are responsible for verifying that hunters comply with legal requirements.

Provisions have been made to delegate responsibility for certain official control functions to the Police and Ministry of Environment inspectors in the event of a major epizootic disease outbreak.

Holding registration, animal identification and movement controls

At the end of 2007, the Animal Registry Database was reorganised into a Farming Animal Registry Database (CDB). The database contains data for all farm animals, animal holdings and keepers. It is maintained by the Agriculture Information and Rural Business Development Centre under the control of the Ministry of Agriculture. It is accessible on the internet to all levels of the territorial SFVS and to authorised veterinarians. The data can be transferred also to animal keepers and animal identifiers.

Slaughterhouses have the possibility to register all slaughtered animals in the database.

The movement of animals is officially controlled through the database by the territorial SFVS. They make official veterinary controls of animal keepers, animal holdings and slaughterhouses.

The Agriculture Information and Rural Business Development Centre is the official organisation which has the right to give animal passports. Almost the entire cattle population (99%) and a proportion of breeding and working horses have passports.

Animal health status

Lithuania is free from the main animal diseases (FMD, CSF, Newcastle disease, Avian influenza, Bovine tuberculosis, Bovine brucellosis).

The following diseases have not been reported in Lithuania: African horse sickness, vesicular stomatitis, glanders, viral encephalomyelitis, equine viral arthritis, and West Nile fever (source: OIE).

The epidemiological situation for rabies had been progressively improved since the start of oral vaccination in 2006. In 2009, 1,122 samples were taken: 49 positive rabies cases were found in wild animals and 14 in domestic animals.

Animal health controls

Animal health surveillance and control programmes are conducted according to an annual plan prepared by the Animal Health and Welfare Department. Based on this plan the territorial services develop a more detailed sampling plan and co-ordinate its implementation. The district and city services report via the county level SFVS to the central Animal Health and Welfare Department.

Official veterinarians working in the territorial services carry out official controls on 10% of the farms. There is an obligation for official veterinarians since 1 January 2007 to carry out official control of at least 10% of cattle farms and 3% of sheep and goats every year. Sampling for the animal health status is carried out by officially authorised private veterinarians contracted by the territorial services.

Annual surveillance programmes have been carried out in 2010 for Foot and Mouth Disease in domestic and wild animals, Classical Swine Fever in domestic and wild boars, Swine Vesicular Disease in domestic animals, highly pathogenic avian influenza in poultry, and low pathogenic avian influenza in poultry and birds (passive surveillance), Newcastle disease in poultry and birds, and rabies in domestic and wild animals. For horses, the 2010 annual monitoring programme covers stud farms, equines in quarantine, registered horses for further sale, horses destined for slaughter and horses for competitions. The diseases tested include: glanders, equine infectious anaemia (EIA), dourine, contagious equine metritis, equine viral arthritis, and equine encephalomyelitis. For slaughter horses, there is

obligatory testing for EIA, glanders and some testing for dourine. In 2009, according to the contagious diseases monitoring plans, serological tests were carried out on 8,029 herds (122,196 cattle) for Brucellosis (all negative), and 34,344 herds (567,288 cattle) for Leucosis of which 43 cattle was found positive. The programme for the eradication of rabies presented by Lithuania for the period from 1 January 2010 to 31 December 2010 was approved by the Commission (Decision 2009/883/EC). In 2010, 2.6 million vaccines (oral baits) were placed in Lithuania. Lithuania implements compulsory vaccination of dogs and cats for Rabies. In 2009, 152,558 dogs and 33,348 cats were vaccinated.

Contingency plans

Contingency plans for FMD, CSF, AI, ND and TSEs have been approved by Commission Decisions in 2004. In 2009, contingency plans for CFS, AI, ND and SVD were reviewed and supplemented by the CA.

New contingency plans for African Swine Fever and African Horse Sickness were issued and adopted in 2009.

Contingency plans for FMD and Bluetongue were planned to be reviewed by the end of 2010.

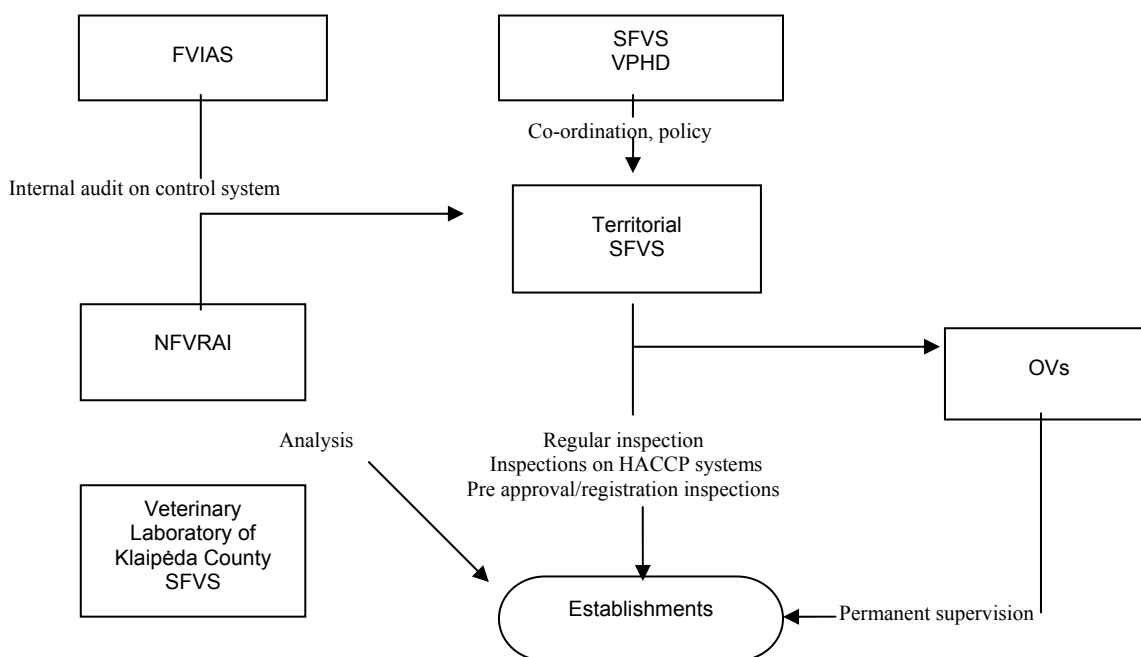
Laboratory services

The National Food and Veterinary Risk Assessment Institute (NFVRAI) in Vilnius is designated for FMD, CSF, AI, ND and TSEs diagnostics. It is accredited for testing for FMD, CSF, AI, ND and TSEs. Proficiency testing for FMD, CSF, AI, ND and TSEs is performed.

Virus isolation is performed for CSF only. At the NFVRAI, construction work is underway to build a bio-hazard level 3 (high security) laboratory.

NFVRAI has an informal agreement with the CRLs on confirmation of positive or suspected cases of AI, ND, FMD and TSEs.

2.2. Control system for food of animal origin



FVIAS	Food and Veterinary Internal Audit Service
NFVRAI	National Food and Veterinary Risk Assessment Institute
OV	Official Veterinarian
SFVS	State Food and Veterinary Service
Territorial SFVS	City, County and District State Food and Veterinary Services
VPHD	Veterinary Public Health Department

Competent Authorities

The CCA for controls of food of animal origin is the SFVS within which all responsibilities for controls on food of animal origin fall under the Veterinary Sanitary and Food Department. Official controls are carried out by inspectors working in the territorial services. Auditing of the territorial services is carried out by the Internal FVIAS.

Registration and approval of establishments

All establishments are registered by the territorial services and are approved by a Director's Order. The approval number is issued centrally. Inspections are carried out by the territorial services, but HACCP audits are carried out annually by county and city services.

In 2010, there were 406 approved establishments in Lithuania, producing animal products and 3,765 registered establishments for handling food of animal origin (milk collection points, fishing vessels, butchers, etc.). Lists of approved establishments are available on the SFVS website at the following address.

<http://vetlt1.vet.lt/vepras/imonpb.asp>

Official controls and inspection at establishments

The frequency of inspections is based on a classification of establishments into three categories of risk: high; medium; and low.

In line with procedure KT-2-1-D3 (reviewed in 2010) on "Classification into risk groups of food businesses operators", food businesses operators are classified into risk groups according to the following assessment criteria:

- group of foodstuffs handled;
- type of food activities;
- volumes of food handling activities;
- state of own control based on HACCP principles including application of GHP.

The territorial SFVS having performed an assessment of the food handling business in accordance with the above 4 criteria, calculates the assessment points, classifies the business into a respective risk group and establishes the frequency of control.

Furthermore, the territorial SFVS take into consideration the recommendations of external and internal audits (within their competence) and the effectiveness assessment results by the State Control Service.

The system of controls comprises three types of checks and inspections:

- permanent or regular supervision in establishments by official veterinarians responsible for the establishment (official veterinarians are all employed as full-time or part time officials by the territorial SFVS. Ante-mortem and post-mortem inspections are carried out by official veterinarians). No auxiliaries are employed;
- regular inspections by inspectors from the territorial SFVS;
- audits on HACCP based systems by inspectors from the county and city SFVS once per year.

For all three types of checks and inspections there are clear inspection protocols and uniform check-lists published as SOPs and working instructions in the quality management system of the SFVS.

A database of establishments and inspections is in place and accessible by the different levels of the SFVS via its intranet. The database allows access to information on the results of controls for individual establishments.

In 2009, 1,149 inspections were carried out in food of animal origin establishments; 549 samples were analysed and 63 samples were found to exceed chemical or microbiological levels.

Official controls on identification marks and traceability

To implement a traceability system, the CA has developed two standard operating procedures within the quality system, namely: KT-2-1-4 on "Traceability control of food and feed" and KT-1-3-D2 on "Actions upon detection of infringements of requirements for quality and labelling of foodstuffs".

The system of traceability is applied according to the principle "a step forward, a step back". Each establishment must ensure identification of the persons or establishments that are suppliers as well as the persons or establishments to which it supplies its products. To this end a registration procedure for documents, suppliers, names and addresses of customers, product types and purchase or delivery dates of the products has been developed and is in use. Furthermore, traceability must be ensured at all points of production. For this, registers of production processes are used.

Traceability control is carried out during each inspection of an establishment. The check lists include questions which enable the inspector to evaluate traceability. The system of traceability is also checked during HACCP audits.

Control on the marking of products is carried out during each inspection of the establishment. The checklists include relevant questions on this issue which the inspector must evaluate. The checklists also contain special questions for the control on the marking of beef and veal carcasses, for both cut and minced meat.

Furthermore, for products on the market, a specific checklist has been developed, namely: "Special requirements for checks on labelling of foodstuffs".

Identification/traceability of slaughter horses has been improved (an equine passport was introduced from June 2006). Order No. 3D of 17/09/2009 provides conditions for the implementation of Commission Regulation 504/2008. In 2010, a total of 13,054 equidae were registered and identified in the CDB and 9,034 new passports were issued.

Sanctions

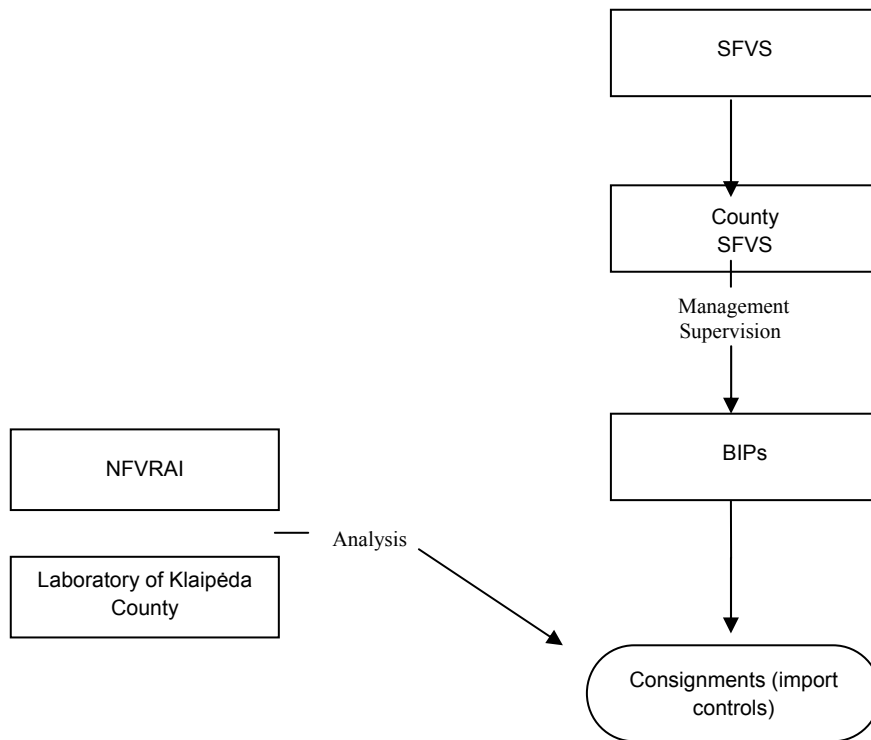
The average penalty for infringements has been increased and a significant number of establishments have been closed (11) or suspended (24) in 2009.

Laboratory services

The National Food and Veterinary Risk Assessment Institute (NFVRAI) in Vilnius is the national reference laboratory designated to perform laboratory analyses of food of animal origin.

The Klaipeda County laboratory also performs analyses of foodstuffs of animal origin.

2.3. Control system for imports of animals and food of animal origin



BIP Border Inspection Post
NFVRAI National Food and Veterinary Risk Assessment Institute
SFVS State Food and Veterinary Service

Competent Authorities

Responsibility for import controls lies with the SFVS at county or city level. Overall co-ordination of the BIP system is the responsibility of the SFVS central service. Audits of the BIPs are carried out by the Food and Veterinary Internal Audit Service.

Government Resolution No. 703 of June 2010 (O.G., 2008, No 139-5501; 2010, No 68-3399) of Republic of Lithuania on the new division of competences among authorities in Lithuania established that the SFVS is the competent authority for the implementation of Regulation (EC) No 998/2003 and Regulation (EC) No 745/2004 and the Customs Department under the Ministry of Finance is the authority who carries out official control of:

- non-commercial movements of pet animals (except pet birds) at the points of entry;
- passengers' luggage at border crossing point where customs is present.

With respect to official control on passengers' luggage at border crossing point where customs are not present, the State Border Guard Service is the authority responsible to carry out the official control.

Import controls

Controls are carried out in the following 12 approved BIPs:

- 3 port facilities at the port of Klaipėda (Molas, Malkų įlankos and Pilis);
- 3 road facilities located at the border with Belarus, (Medininkai, Šalčininkai, and Lavoriškes);

- 1 rail facility (Kena) located also at the border with Belarus;
- 4 facilities located at the border with Kaliningrad (two for rail traffic and two for road traffic (Kybartai road and rail, Panemune road, Pagėgiai rail));
- 1 airport facility at Vilnius airport.

8 Border Inspection Posts (BIPs) were accredited by the GAB. The remaining 4 non-accredited BIPs are envisaged to get accreditation in 2012.

To ensure effective functioning of the BIPs they will be directly accountable to the central SFVS from 1 July 2011.

The Border Veterinary Control Information Management System (BVCIMS) is now operational.

Almost all procedures are carried out according to SOPs and working instructions which are part of the quality management system of the SFVS. Various procedures and working instructions were approved in August 2006 (import of animal origin products from third countries), in February 2007 (transit of animal origin products from third countries), in April 2008 (import of live animals from third countries), in November 2008 (import of feedstuffs from third countries; transit of feedstuffs from third countries) and in January 2009 (re-import of animal origin products from third countries).

Most of the consignments from third countries are related to transits.

Year	Transit consignments	Import consignments of products of animal origin
2007	34,204	2,219
2008	62,229	2,499
2009	56,104	2,309

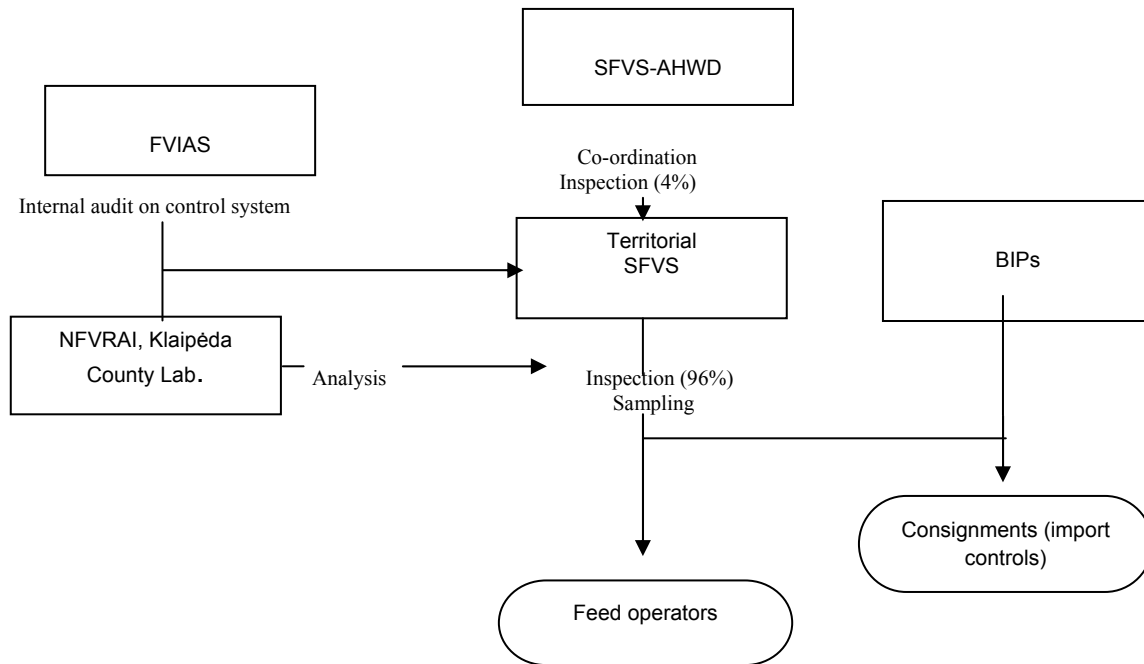
Sampling for laboratory analysis on imported products and animals is carried out at each BIP on the basis of an annual risk-based sampling programme prepared by the SFVS.

Year	Laboratory analyses performed on products of animal origin	Alert notifications (RASFF)
2007	403	22
2008	508	5
2009	505	13

Laboratory services

The National Food and Veterinary Laboratory Risk Assessment Institute (NFVRAI) in Vilnius is the reference laboratory designated to perform laboratory analyses of imported animals and products of animal origin. The Klaipėda County laboratory also performs analyses of imported products of animal origin.

2.4. Control system for feeding stuffs and animal nutrition



CDB	Farming Animal Registry Data Base
FVIAS	Food and Veterinary Internal Audit Service
NFVRAI	National Food and Veterinary Risk Assessment Institute
SFVS	State Food and Veterinary Service
SFVS-AHWD	State Food and Veterinary Service Animal Health and Welfare Department

Competent Authorities

Feed Law No XI 654 was amended and adopted on 14/01/2010 (under O.G. 30/01/2010, No 12-560). This Law designated the SFVS as the competent authority for the organisation and implementation of official controls on feed stuffs and animal nutrition. According to this Law, the SFVS took over the roles formerly carried out by the by the State Seed and Grain Service (SSGS) and State Plant Protection Service (SPPS).

The SFVS quality management procedure KT-2-5 on "Official veterinary feed control" was amended with provisions concerning effective and efficient information flow between territorial SFVS. The aim is to further optimise and improve the communication arrangements between counties and within cities territorial services.

Auditing of the territorial services is carried out by the FVIAS.

Registration and Approval of establishments and intermediaries

From 1 July 2010, the State Food and Veterinary Service (SFVS) is the Competent Authority for the approval/registration of all the feed operators (including feed producers who do not keep animals).

Two new implementing Feed Laws were reviewed and adopted: rules for approval (order No 3D-594 of Minister of Agriculture on 28/06/2010) and rules for registration (order No 3D-536 of Minister of Agriculture on 03/06/2010). According to these rules, counties and cities SFVS have responsibility for approval of FeBOs, and all territorial SFVS (counties, cities and districts) responsibility for registration of FeBOs.

The operators submit documentation for approval/registration. In the case of registration only, the SFVS analyses the documents and, after positive evaluation, registers the operator. Where approval is required after the analysis of documents by SFVS, a pre-approval on-the-spot visit is carried out by specialists of the SFVS. After a positive evaluation the operators are approved by order of the head of the SFVS.

The list of approved/registered establishments is maintained by the SFVS and published on the SFVS website at the following address:

<http://vmvt.lt/lt/top/viesosios.paslaugos/informacijos.rinkmenos>.

The Feed database (Register) was upgraded in 2009 and now allow for the identification of food operators who supply feed.

Official control

The FeBOs establishments are categorised into three types (low, medium and high risk) on the basis of the activity performed, the results of official controls, any complaints concerning their activities and the reliability of their HACCP system. The risk categorisation of all FeBOs is performed by territorial services and, based on the category, the following frequencies of inspections are to be required:

- one to two inspections every four years for low risk FeBOs;
- one to two inspections every year for medium risk FeBOs;
- two to three inspections every year for high risk FeBOs.

A new risk categorisation procedure (updating procedure KT-2-5) to be approved by the end of 2010 contains additional criteria and a specific IT tool to automatically assign risks group and number of inspections to FeBOs.

NFVRAI prepares an annual feed control plan which is then approved by the SFVS Director's Order. The plan covers inter alia testing for residues and contaminants.

With regard to controls on feedingstuffs imported into Lithuania, work instructions (KT-6-4-D3 and KT-6-4-D4) concerning physical checks and veterinary checks for import of feed of non-animal origin from third countries were amended in March 2010. The new instructions specify that the frequency of checks and sampling should be based on risk, including RASFF information and that frequency should never be less than 1 in every 20 consignments of the same product originating from the same country.

For products imported through Lithuania to other EU countries, the BIPs carry out a documentary check and a random identity check.

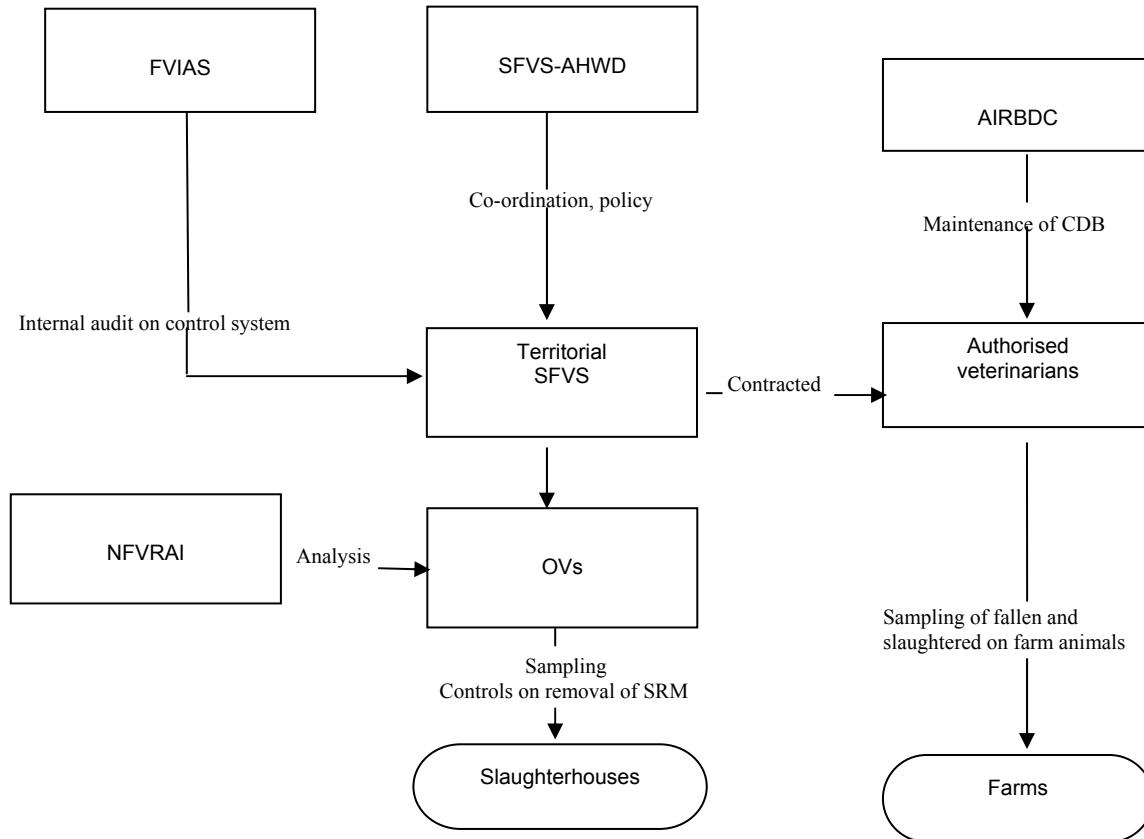
A new database system for collecting information on feed imports was installed in 2009. This system enables the service to carry out data analysis, collect and exchange information with the MEN on the type and amount of genetically modified feed. In future, such informations is planned to be transferred to the central GMO database of administered by te MEN.

Laboratory service

The National Food and Veterinary Risk Assessment Institute (NFVRAI) in Vilnius is the reference laboratory and is designated to perform laboratory analyses of feedingstuffs. The Klaipeda County laboratory also performs analyses of feedingstuffs.

2.5. Control system for TSE and Animal By-Products (ABP)

TSEs



AIRBDC	Agriculture and Rural Business Development Centre
FVIAS	Food and Veterinary Internal Audit Service
NFVRAI	National Food and Veterinary Risk Assessment Institute
OV	Official Veterinarians
SFVS-AHWD	State Food and Veterinary Service Animal Health and Welfare Department

Competent Authorities

The CCA for TSEs is the State Food and Veterinary Service (SFVS). All responsibilities for TSEs fall under the Animal Health and Welfare Department. Official controls are carried out by official veterinarians working in the territorial services. Auditing is carried out by the FVIAS.

Epidemio-surveillance

Animal health surveillance and control programmes, including TSEs, are conducted according to an annual plan drawn up by the Animal Health and Welfare Department.

Based on the annual plan the territorial services develop more detailed inspection and sampling plans.

The District SFVS report via the county level to the Animal Health and Welfare Department.

In 2009, 88,449 samples were investigated for BSE (243 from animals with clinical signs at ante-mortem, 1,936 from emergency slaughtered animals, 2,158 from fallen stock, and 84,112 from healthy slaughtered animals) and 2,215 samples for TSEs in sheep and goats. No cases of BSE, suspected BSE or TSEs in sheep and goats have ever been officially reported in Lithuania.

Specified Risk Material (SRM)

Official veterinarians must ensure that all SRM is processed and disposed off in line with the requirements of Annex XI to Regulation (EC) No. 999/01, including those derived from animals slaughtered on farm and fallen stock. In particular, the SFVS issued Order No B1-610 on 9/11/2005, requiring that animal keepers notify a) official veterinarians about animals slaughtered on-farm for own consumption, and b) their private veterinarian in cases of fallen stock and the rendering plants dealing with collection.

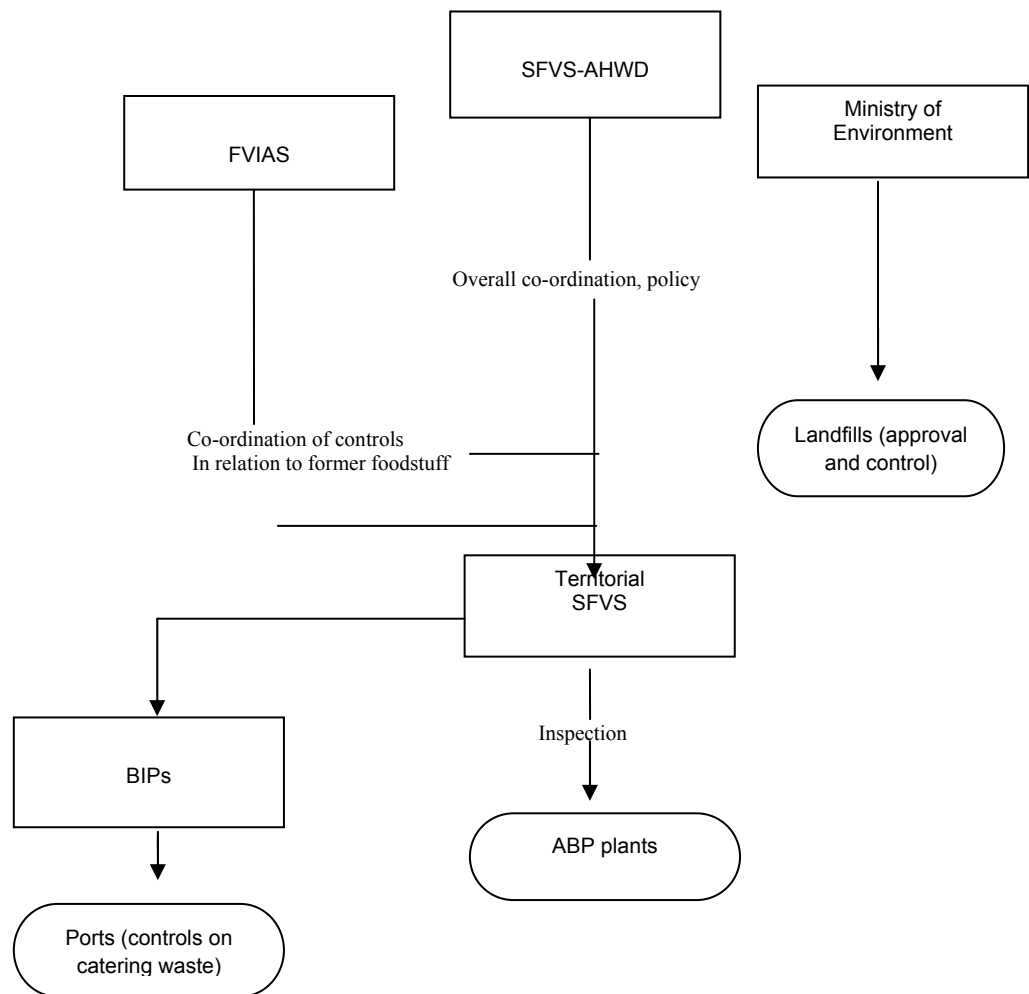
Total feed ban

Council Decision 2000/766/EC has been transposed into national legislation by Order 01-13-1415 of the Director of the State Food and Veterinary Service of the Republic of Lithuania "On the Prohibition of All Processed Animal Proteins in Animal Feeds", issued on 12 December 2000. According to this order meat-and-bone meal, meat meal, bone meal, blood meal, dried plasma and other blood products, hydrolysed proteins, hoof meal, horn meal, poultry offal meal, feather meal, dry greaves, fish meal, dicalcium phosphate, gelatine and any other similar products including mixtures, feedingstuffs, feed additives and premixtures, containing these products are prohibited for the feeding of farm animals.

Laboratory Services

The National Food and Veterinary Risk Assessment Institute (NFVRAI) in Vilnius is the reference laboratory and is designated to perform laboratory analyses of TSEs.

ABP



ABP	Animal By-products
BIP	Border Inspection Post
FVIAS	Food and Veterinary Internal Audit Service
SFVS-AHWD	State Food and Veterinary Service Animal Health and Welfare Department

Competent Authorities

The CCA for controls on ABPs is the SFVS. The Animal Health and Welfare Department deals with ABP plants, farms and food business operators.

Import controls, including controls on international catering waste, have been assigned to the territorial services.

The Ministry for the Environment is responsible for approvals and official controls of landfill sites.

Approval of ABP plants and other premises

Approval of ABPs operators is granted by the SFVS following an inspection visit and a favourable report. Lists of approved plants are available on the SFVS website at the following address: <http://vmvt.lt/objektai2/ENindex.php>.

Own-checks in processing plants and intermediate plants are evaluated by the territorial SFVS as part of the approval procedure. The CA has noted that the validation process (particularly in new "closed"/complex processing plants) is problematic due to the absence of suitable experts in Lithuania and practical difficulties in introducing sensors for the purposes of making official checks. The CA has committed itself that when the new Regulation (EC) No. 1069/2009 which repeals Regulation (EC) No. 1774/2002 is in effect, the SFVS will amend correspondingly the checklists for validation and then adopt them soon after. Meanwhile, they will send a national expert for specific training on "Validation of the ABP processing plants". These measures are now planned to be adopted after 04/03/2011.

Official controls

Routine controls on food and ABPs operators are carried out by official veterinarians or authorised veterinarians. The former are responsible for ensuring compliance with ABPs provisions in ABPs plants, high-capacity meat establishments and milk processing establishments, and the latter are responsible for regular inspections of other establishments in the food chain and of farms.

As regards checks on international catering waste, the responsibility lies with the county and city levels of SFVS.

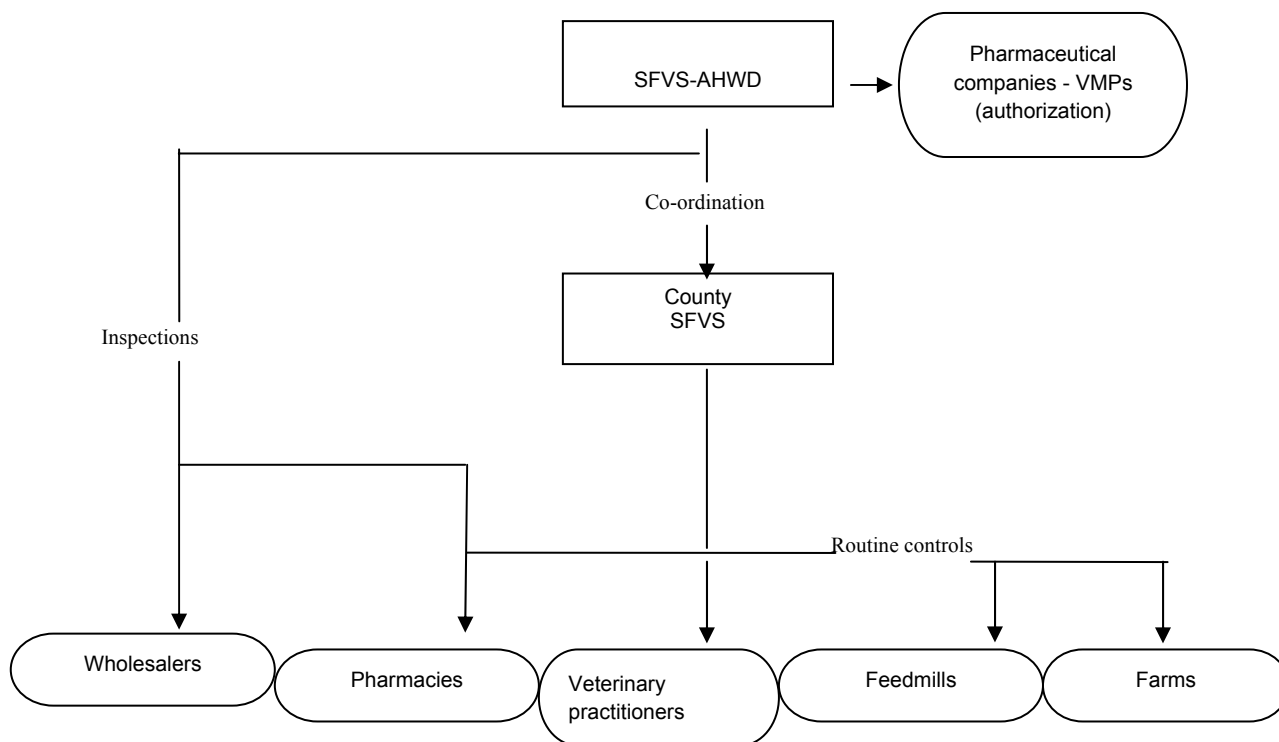
National rules require that all processing plants, intermediate plants, pet food plants, biogas plants and keepers of fur animals should be inspected quarterly and all technical plants twice a year.

The SFVS has established checklists for control purposes and different forms for the suspension of approvals, lifting of suspensions and withdrawal of approvals.

Quarterly reports from the county services to central level include detailed data on ABP quantities and flows at different levels. The reports cover data related to ABP plants as well as slaughterhouses and BIPs, and are used by the SFVS for an overall reconciliation exercise.

2.6 Control system for veterinary medicinal products and residues

Veterinary Medicinal Products (VMP)



AHWD Animal Health and Welfare Department
SFVS State Food and Veterinary Service
VMP Veterinary Medicinal Product

Competent Authority (medicines)

The CCA for the authorisation and control on the marketing/use of Veterinary Medicinal Products is the Animal Health and Welfare Department of the SFVS.

Authorisation of VMPs

The National Food and Veterinary Risk Assessment Institute (NFVRAI) is the body responsible for assessment of the quality, efficacy and safety of VMPs and biocides for veterinary use in Lithuania. Authorisations of VMPs are issued by the SFVS after consulting the NFVRAI.

A list of VMPs with marketing authorisations is available at the following website address:
<http://vetlt1.vet.lt/vr/>

Authorisation of wholesalers and veterinary pharmacies

Wholesalers and veterinary pharmacies are authorised by the State Food and Veterinary Service.

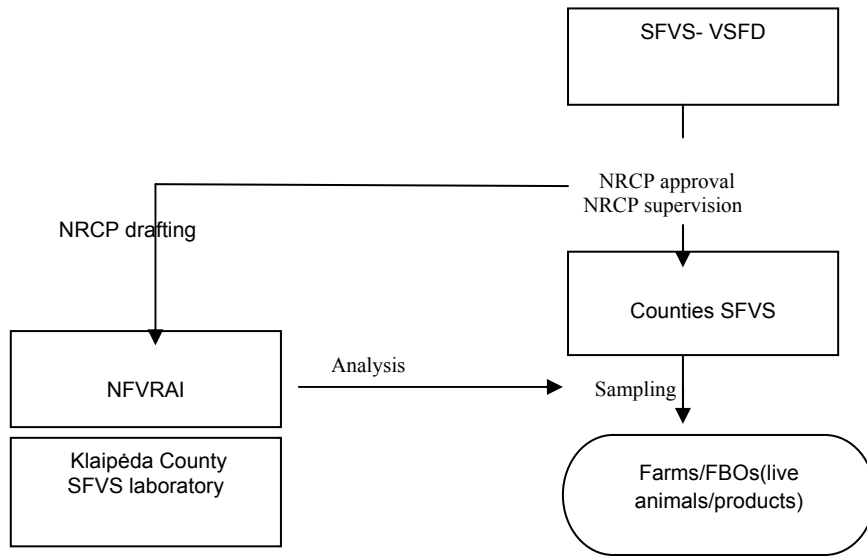
Official controls on marketing/use of VMP

The District and City SFVS, or the County SFVS in areas not covered by a District or City SFVS, are responsible for controls on the use of veterinary medicinal products by veterinary pharmacies, private veterinary practitioners, farms and feed mills.

The majority of veterinary medicinal products for food producing animals are prescription-only and those veterinary medicinal products for which veterinary prescriptions are not required have all been evaluated by the SFVS in line with the requirements of Commission Directive 2006/130/EC. Standardised prescription forms and purchase orders for veterinary practitioners are laid down in national legislation.

The District SVFS offices are responsible for a risk based selection of farms for inspection and for setting the frequency of inspections.

Residues



NFVRAI National Food and Veterinary Risk Assessment Institute
NRCP National Residue Control Plan
SFVS State Food and Veterinary Service
VSFD Veterinary Sanitary and Food Department

Competent Authority (residues)

The CCA for residue controls is the SFVS. Responsibility for the overall implementation of the National Residues Control Plan (NRCP) lies with the Veterinary Sanitary and Food Department.

The National Food and Veterinary Risk Assessment Institute is responsible for drafting the NRCP in accordance with Article 4 of Council Directive 96/23/EC. The plan is presented to the VSFD and approved by order of the Director of the SFVS.

The NFVRAI is designated as the National Reference Laboratory (NRL) for residues.

Sampling for residue monitoring is performed by authorised inspectors from county services.

Auditing of the territorial services is carried out by the FVIAS.

Official controls on residues

In the planning of the NRCP, the NFVRAI take account of animal population, production data, laboratory capacity and capability and previous non-compliant results. The NFVRAI allocates a proportional number of samples in the NRCP to each of the county services. The distribution of samples between food business operators is a task of the County SFVS and should be completed within 14 days after receiving the county-specific NRCP from the central authorities. Samples are taken by official veterinarians.

Reports on the implementation of the plan are sent quarterly by the counties to the VSFD and NFVRAI.

In cases of non-compliant testing results, the NFVRAI informs by fax and email the county services that had dispatched the samples for testing and the VSFD.

In 2009, 3,462 samples of live animals and animal products were analysed according to the NRCP. 16 samples were found to be non-compliant.

Laboratory services

There are two laboratories, which perform laboratory analyses of residues the NFVRAI and Klaipėda County SFVS laboratory. Both laboratories are accredited according to LST EN ISO/IEC 17025:2005 requirements.

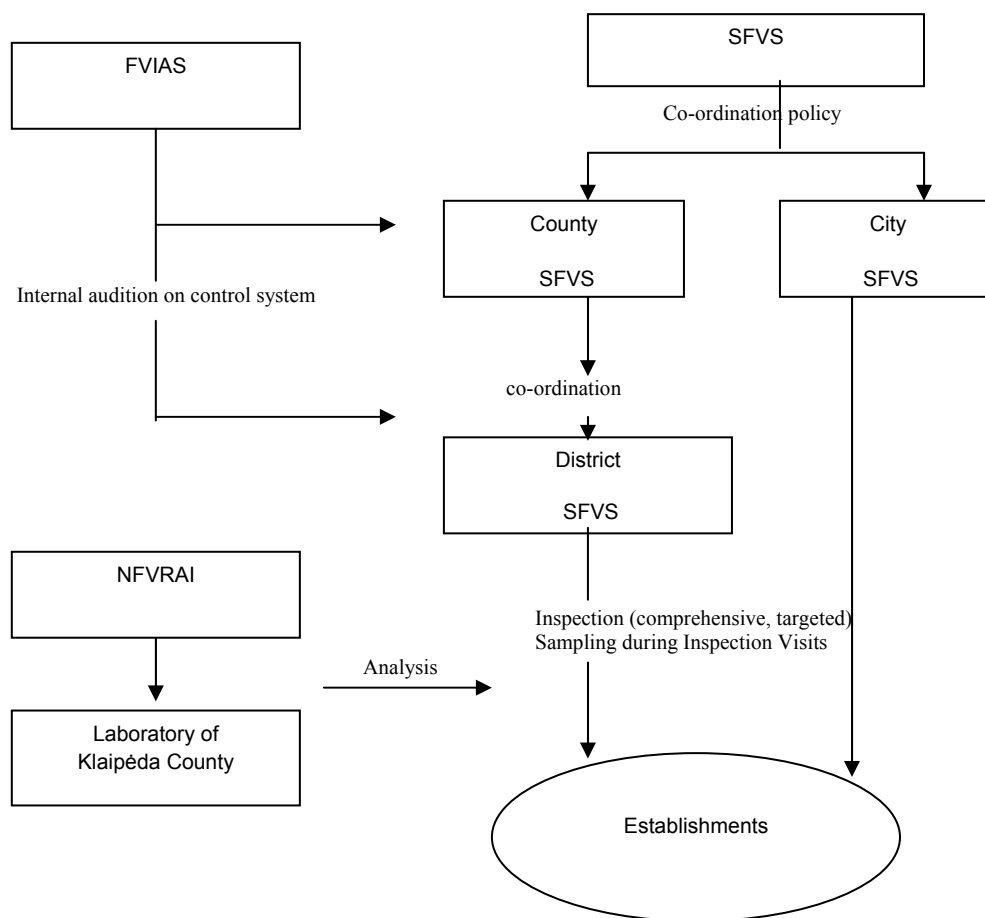
For the implementation of the NRCP for 2010, the CCA had agreements with the following laboratories:

- Eurofins W.E.J. GmbH (Germany), for confirmatory testing of B3e group in aquaculture, B1 group in honey, A3 group in urine, B3a group in aquaculture, milk, meat, eggs, feed.
- Food Safety, Animal Health and Environment Scientific Institute (Latvia), for confirmatory testing of A3 and B3c group substances.
- Landeslabor Schleswig-Holstein (Germany), for confirmation of analyses for B2d group and A6 group substances.
- Bundesamt für Verbraucherschutz und Lebensmittelsicherheit (Germany), for confirmation of analyses for A5 group and A6 group substances.
- Rikilt (Netherlands), for confirmation of analyses for B2e group substances, for confirmation of analyses of A3 group substances.
- GALAB laboratories GmbH (Germany), laboratory analyses of A3 group, B2a group, B2b group substances.

According to the CCA, all laboratories supplying analytical services under the NRCP are accredited according to ISO 17025 and carry out analyses of samples using validated methods according to the requirements of Commission Decision No. 2002/657/EC.

The NFVRAI is the national reference laboratory for analyses of residues of all substances groups in animals and animal products and performs most of the analyses according to the NRCP.

2.7 Control system for food of plant origin and general food hygiene



FVIAS Food and Veterinary Internal Audit Service
NfVRAI National Food and Veterinary Risk Assessment Institute
SFVS State Food and Veterinary Service

Competent Authorities

The CCA for controls on foodstuffs and food hygiene is the SFVS. The Veterinary Sanitary and Food Department deals with the control of foodstuffs (imports, exports and foodstuffs placed on the market) and food hygiene. It is also responsible for food contact materials (FCM) and food additives (FA) in food establishments, and import controls of FA.

The following authorities are also responsible for some aspects of the control system:

- the State Environmental Health Centre (SEHC) under the Ministry of Health (MH) is the CA responsible for drafting national legislation and transposition of EU legislation on contaminants, food additives, novel foods and packaging materials in the form of Hygiene Norms;
- the State Public Health Service (SPHS) under the Ministry of Health (SPHS) is the CA responsible for the official control of FCM manufacturers and import from third countries (including packaging);
- the Ministry of Agriculture is responsible for establishing the requirements for quality and composition of food, raw materials, cultivation of plants for human consumption, and organic food;

- the Ministry of Economy is responsible for legislation on labelling of foodstuffs and the State Non-Food Products Inspectorate (SNFPI) under the same Ministry performs official controls of FCM not yet in contact with food at retail and wholesale stages.

Official control data is entered into a centralised Food Information System “FIS”.

Auditing is carried out by the FVIAS.

Licensing and Registration of Food Premises

In Lithuania, natural or legal bodies which handle food must hold an approval (registration) certificate issued by county, city or district authorities in accordance with the requirements for the Approval (registration) of Food Handling Entities Order No. B1-527 of 15 October 2008. This Order was produced in accordance with Regulation (EC) No. 852/04 and 882/04.

Natural or legal bodies must apply for a certificate from the territorial service and supply the necessary documents for review. Within 10 working days from acceptance of the documents, the service, after inspecting and evaluating the entity, issues a certificate or, if non-compliant is detected, presents a written report on the nonconformities.

Registration is entered on the computer system (FIS), and details are accessible by territorial and central SFVS.

In 2009, there were 25,889 food establishments of non-animal origin, 14,590 trading establishments, 8,453 public catering establishments, 1,958 drinking water supply entities and 888 food of animal origin producing establishments.

Official controls of food premises

For other departments, the planning of strategic activities over a two year period is contained in the MANCP. Detailed quarterly and annual inspection plans are drawn up by the territorial services. Each calendar year, the central SFVS draws up a plan on the selection of samples during inspections and a specific monitoring plan for contaminants.

Official controls are prioritised taking into account:

- Implementation and compliance with new EU Regulations and other legal acts;
- EU recommendations;
- Registration and investigation data of outbreaks of infectious diseases;
- Information of previous inspections and laboratory testing.

The prioritisation of official food controls is modified each year with respect to risk and changing priorities.

The SFVS uses Standard Operating Procedures (SOP) and Working Instructions (WI) implemented within the Quality Management System (QMS) ISO 17020:2004, when performing official food controls.

Planned and unplanned inspections are carried out. For planned inspections, the frequency of controls is based on the level of risk determined by the Veterinary Sanitary and Food Department (high, medium and low risk). Unplanned controls are carried out on the basis of consumer complaints, notifications from institutions and agencies, and epidemiological data.

Data and findings of official food controls (planned and unplanned) are entered into the centralised Food Information System (FIS) which is fully operational. The system allows easy access to inspection data, to facilitate analysis of the data, co-ordination of activities of officials, harmonisation of inspections and provision of information to the public.

Reports for the sectors not fully covered by the FIS are drawn up according to approved forms and are transmitted to the central SFVS. Quarterly and annual reports of official controls are prepared, and the information is supplied to SFVS management and to the relevant European and Lithuanian institutions and to the consumers.

Sanctions

In 2009, 25,961 (non-animal origin food establishments, trading establishments, public catering establishments, drinking water supply entities) inspections were carried out and 6,815 samples (6,297 inspection samples and 518 samples under the Food Contamination Monitoring Programme) were analysed. Of these, 330 samples were non-compliant (324 inspection samples and six samples under the Food Contamination Monitoring Programme).

In summary, there have been more penalties issued but fewer suspensions required. The VSFD has also adopted the "name and shame" approach, where serious non-compliances are detected.

Good Hygiene Practice Guides

14 guides by food industry associations have been prepared. Guides for Good Hygiene Practice are drafted by food business associations and agreed by the Ministry of Health (and sometimes by the Ministry of Agriculture). Dissemination is carried out by the associations. The following areas are covered by the guides: catering establishments, bakeries, food retail establishments, grain warehouses, confectionery, mineral and spring water, soft drinks, fresh fruit and vegetable warehouses, canned fruit and vegetables, butcher shops and food markets, primary grain production, milk and dairy products for direct sale, and materials coming into contact with foodstuffs. Further guides are in preparation or are awaiting approval by the Minister of Health.

About 98% of establishments are already applying food safety procedures based on the HACCP principles and the remainder are in the course of developing and implementing these procedures.

Rapid Alert System for Food and Feed (RASFF)

The department of Risk and Quality Management within the SFVS is the National Contact Point for RASFF. A manual providing written procedures for the operation of the system is available at all levels. Information is generally processed by means of e-mail and/or fax transmissions. The department pre-selects notifications received from the EU, and relevant information is passed on to the territorial services.

Where unsafe foodstuffs are found on the market, notifications are submitted to the national contact point, which is responsible for assessing the information and issuing alerts through the RASFF.

Laboratory services

The National Food and Veterinary Risk Assessment Institute (NFVRAI) in Vilnius is the reference laboratory and perform laboratory analyses of foodstuffs and food hygiene.

The Klaipeda laboratory also performs analyses of foodstuffs and food hygiene.

GMO

Competent Authorities

The CCA for GMOs is the Ministry of the Environment. The Ministry is responsible for the co-ordination of committees and authorities, for the evaluation of applications and for the maintenance of a database on controls of GMOs.

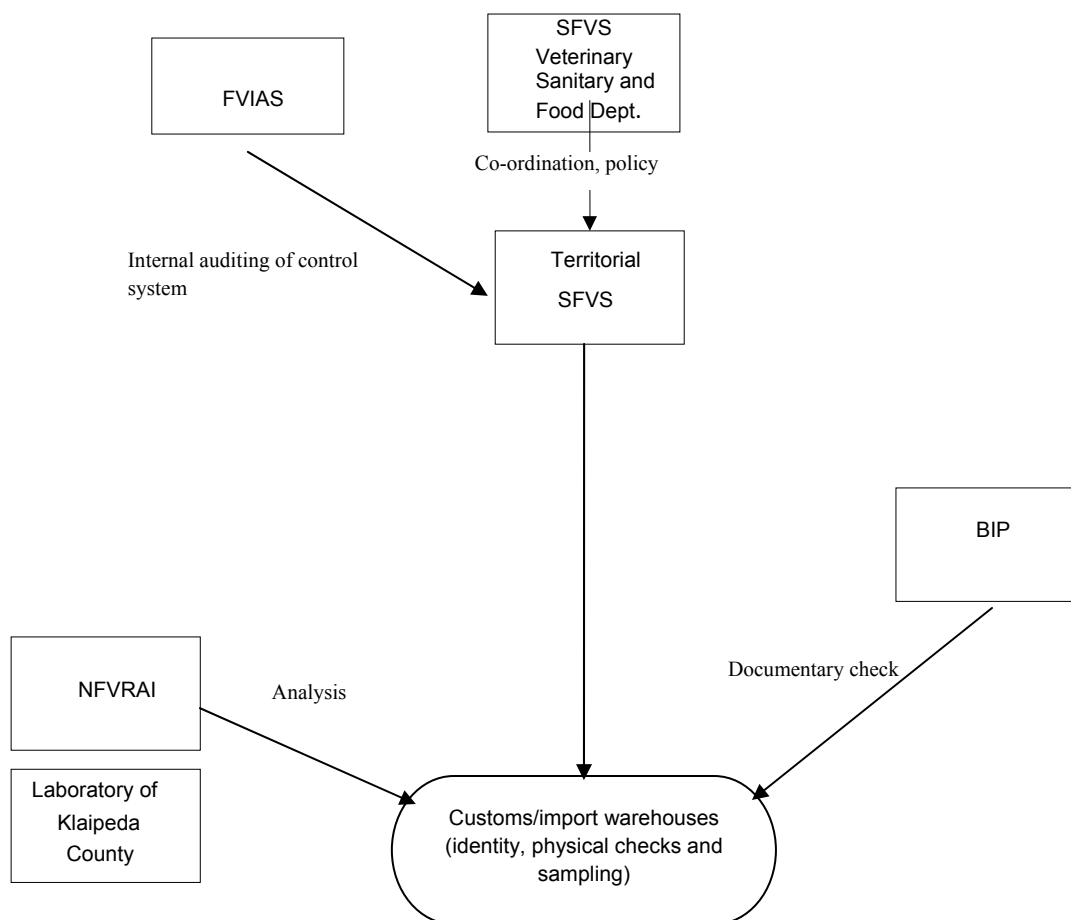
Food-related risk assessment for GMOs falls under the responsibility of the Ministry of Health.

The following authorities are responsible for controls:

- the SPS is responsible for controls on imports of technical products and propagation material, the co-existence of GMO crops with traditional crops and for crop controls;
- the SFVS is responsible for controls on food and feed.

Laboratory analyses are performed by the National Food and Veterinary Risk Assessment Institute (NFVRAI).

2.8 Control system for imports of food of plant origin



BIP	Border Inspection Post
FVIAS	Food and Veterinary Internal Audit Service
NFVRAI	National Food and Veterinary Risk Assessment Institute
SFVS	State Food and Veterinary Service

Competent Authorities

The CCA responsible for import controls on food of plant origin is the State Food and Veterinary Service (SFVS). Overall co-ordination of controls on food of plant origin is the responsibility of the SFVS Sanitary Veterinary and Food department.

Controls are carried out at 12 Border Inspection Posts (documentary checks) and by the county, city and district services (identity and physical checks and sampling at customs or importer warehouses) of the SFVS. Control procedures are described in the quality system documents. Almost all procedures are carried out according to SOPs and working instructions which are part of the quality management system of the SFVS.

Auditing is carried out by the Internal Food and Veterinary Audit Service of the SFVS.

Import controls

After arrival, consignments of food of non-animal origin are first checked by the customs authorities. Customs decide if the consignment needs to be sent to the BIP for further checks.

At the BIP, inspectors undertake a documentary check. Information related to "sensitive" food consignments (origin, code of importer, date of entry and destination) is entered in a computer database accessible to the inspector of territorial SFVS (the NEMAS database is fully operational). This system provides automatic "flagging" of items requiring further action by the SFVS inspectors).

After a documentary check at the BIP, an authorisation is given by customs and the product is stored in the customs or importers warehouses until the territorial food inspectors of the SFVS examine the consignment and make a decision on the acceptance of the product.

As a general rule, sampling takes place on 10% of the imported consignments unless specific Commission regulations stipulate a higher or smaller frequency of control. Pending the availability of analytical results, the product is detained in customs or importers' warehouses under supervision of the SFVS territorial inspector.

Results of the analysis of the consignments are sent by the NFVRAI directly to the inspectors and importers. In the case of non-conformities they are also sent to the Veterinary Sanitary and Food Department and the Centre (department) for Contingencies and Contagious Diseases of the SFVS.

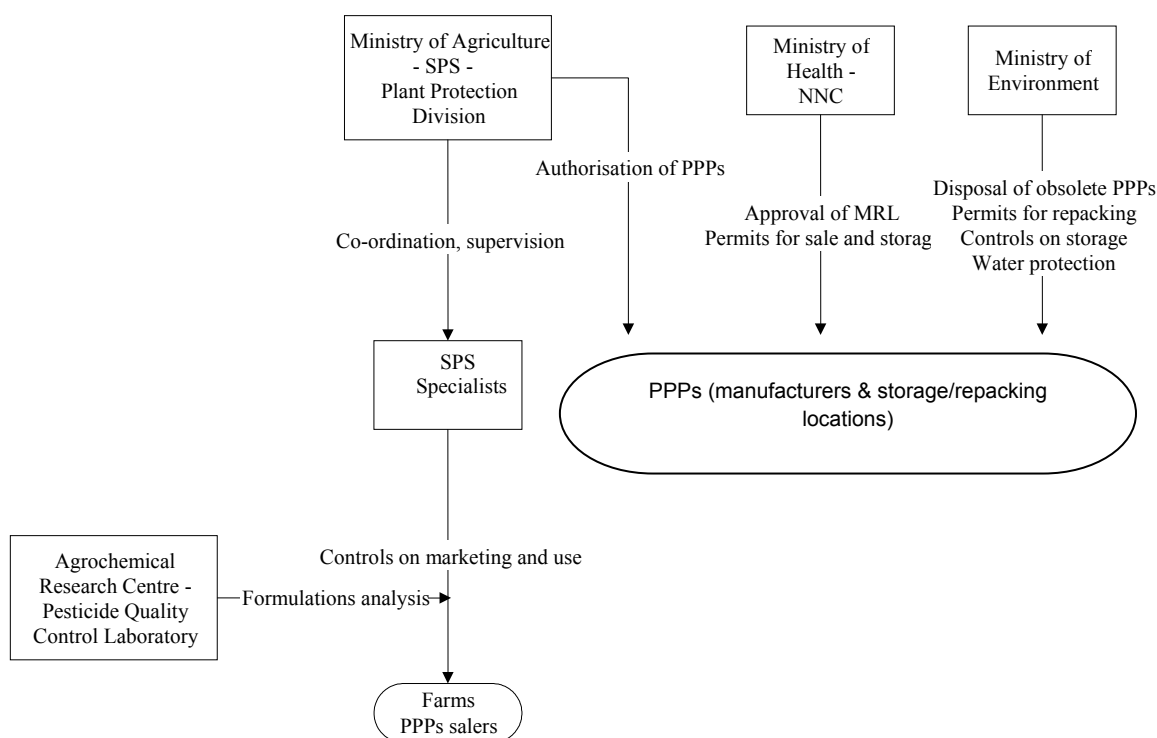
Once the analyses have been completed, the inspector informs the owner of the consignment about the result. The consignment is released or, in the case of non-conforming products, the importer decides on the alternative course of action. Importers are given 60 days to make a decision about the final destination of the consignment and submit all the consignment documents to the territorial SFVS inspector.

In 2009, Lithuania imported 81249 tonnes (3485 consignments) of sensitive food products of plant origin (nuts, figs, citrus fruits, paprika, grapes, raisins, red bilberries, cranberries, soya and maize; soy sauces; iodine salt; food additives; palm oil etc.). In 2009, there were 6 alert notifications sent via RASFF to the EU in relation to imported non-animal food.

Laboratory services

The National Food and Veterinary Risk Assessment Institute (NFVRAI) in Vilnius is the reference laboratory and is designated to perform laboratory analyses of imported foodstuffs of non-animal origin.

2.9 Control system for plant protection products (PPP) and residues



MRL	Maximum Residue Limit
NNC	National Nutrition Centre
PPP	Plant Protection Product
SPS	State Plant Service

Competent Authorities

The CCA for the authorisation and controls of marketing and use of plant protection products (PPP) is the State Plant Service under the Ministry of Agriculture (SPS).

The Plant Protection Products Control Division is responsible for preparing drafts of legal acts, organisation and supervision of PPPs' post-registration controls, issuing permits for trade and import of PPPs from non-EU countries, organising certification of sprayers and controls on their use, preparing statistical data on the sale and import of PPPs from non-EU countries, training of inspectors, preparing inspection guidelines, analyses of inspection results.

Official controls are carried out by SPS specialists working at territorial level.

The National Nutrition Centre under the Ministry of Health is responsible for evaluating data on residues during PPPs authorisation, approving maximum residue levels in plants and products of plant origin, preparing the list of banned and restricted active substances.

The Ministry of Environment is responsible for: issuing permits for repacking of PPPs, preparing legal acts on surface water protection zones for use of PPPs, controlling storage and use according to environmental requirements, and disposal of obsolete pesticides.

Authorisation of PPPs

The evaluations for national authorisations are carried out by specialists of the Plant Protection Products Registration Division. There are 249 PPPs authorised in Lithuania, containing some 152 active substances. 233 PPPs are still present on the market.

A list of the authorised PPPs is available on the SPS website at the following website address: <http://www.vatzum.lt>.

Official controls on marketing/use

An annual plan for control of the marketing, use and sampling of pesticides is prepared by the Plant Protection Products Control Division and approved by the Director of the SPS. It prescribes the types and frequency of controls to be carried out, additional activities of the inspectors and the number of samples to be taken.

Since 2006, three new legal Acts have been adopted (issue of permits for restricted use, sampling methods and permits for scientific trials).

Controls are carried out by 22 specialists reporting directly to the Plant Protection Products Control Division of the SPS. Based on the annual plan, the specialists develop more detailed inspection plans. There is now enhanced supervision of specialists carrying out "post registration controls". Specialists are generally responsible for 2 to 4 districts each. Regular inspections are carried out at marketplaces, stores and farms. An agreement with the Agricultural Information and Rural Business Centre gives access to important farm data such as farm area and type of crops under cultivation.

Following each inspection the specialist fills in duplicate signed copies of a standard check list. Twice a year specialists present a report to the Plant Protection Products Control Division.

In cases of infringements, fines are imposed directly by the specialists according to the Administrative Code of Lithuania.

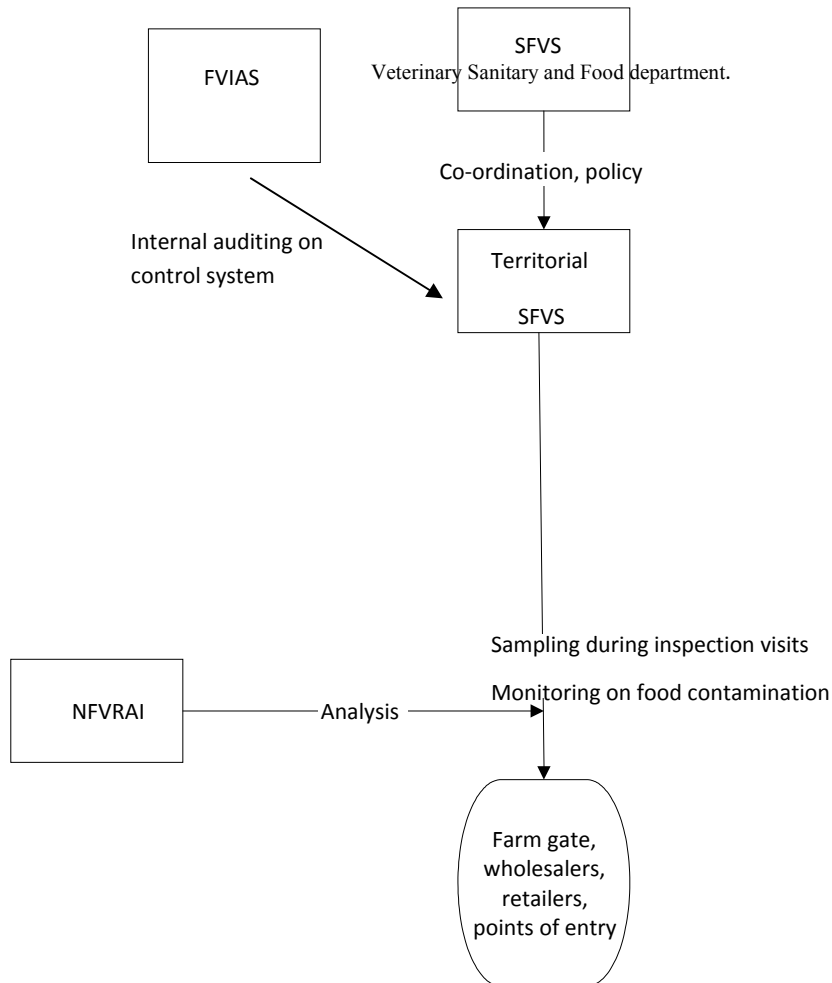
In 2009, 4,519 units of PPP control targets on marketing, storage, use, packaging and labelling were inspected. As a result of these inspections - 837 infringements were detected. Of these, 823 infringements were subsequently corrected and 14 resulted in the imposition of fines.

Laboratory services

The Pesticides Quality Control Laboratory of the Lithuanian Agrochemical Research Centre, located in Kaunas, is responsible for pesticide formulation analyses. The laboratory reports to the Department of Education but has an annual contract with the SPPS. The laboratory has adopted a quality management system according to standard ISO 17025 requirements. On 6 October 2005, the laboratory was accredited by the National Accreditation Bureau for the testing of active substances in PPPs.

In 2008, the laboratory analysed 95 samples of PPPs.

Pesticide Residues



- FVIAS** Food and Veterinary Internal Audit Service
- NFVRAI** National Food and Veterinary Risk Assessment Institute
- NNC** National Nutrition Centre
- SFVS** State Food and Veterinary Service

Competent Authorities

The CCA for the control of pesticide residues is the State Food and Veterinary Service (SFVS). Overall co-ordination of controls on pesticide residue is the responsibility of the SFVS Sanitary Veterinary and Food department.

Official controls are carried out by 64 food inspectors working in the territorial services. Controls take place on farms, wholesalers, and retailers, and at points of entry.

Auditing of the territorial authorities is carried out by the Food and Veterinary Internal Audit Service.

Official controls on pesticide residues

Each year, the Sanitary Veterinary and Food Department prepares, as part of the monitoring programme on food contaminants, a detailed pesticide residues monitoring plan including the number and type of samples to be taken in each county, city, district and the number of domestic and non-domestic products to be sampled.

Inspectors send samples to the National Food and Veterinary Risk Assessment Institute (NFVRAI). A compensation fee, to cover the cost of the sample, is paid to the SFVS, except for samples on imports from third countries. Where the samples do not meet the requirements established by legal acts, analysis of the samples is paid for by the owner.

The NFVRAI sends an analytical report to the inspector responsible for taking the sample. The inspector taking the sample evaluates whether the MRLs has been exceeded and decides on any necessary follow-up action.

Inspectors are empowered to act in cases of violation of the law. An administrative process is initiated in cases of major infringements. When MRL infringements are identified at point of entry, the subsequent three consignments of the same type are sampled for pesticide residue analysis.

In 2009, 298 samples were analysed (218 under the contaminants monitoring programme and 80 as inspection samples). Eleven samples were found to contain residues exceeding permitted EU levels.

Obsolete pesticides

The company SAVA plans to pack obsolete pesticides in 60 litre polyethylene or 200 litre metal containers marked with codes UN X or Y. The containers will be weighed, put on pallets, fixed with a polyethylene or metal band. Each container will be marked in accordance with the ADR requirements and labelled.

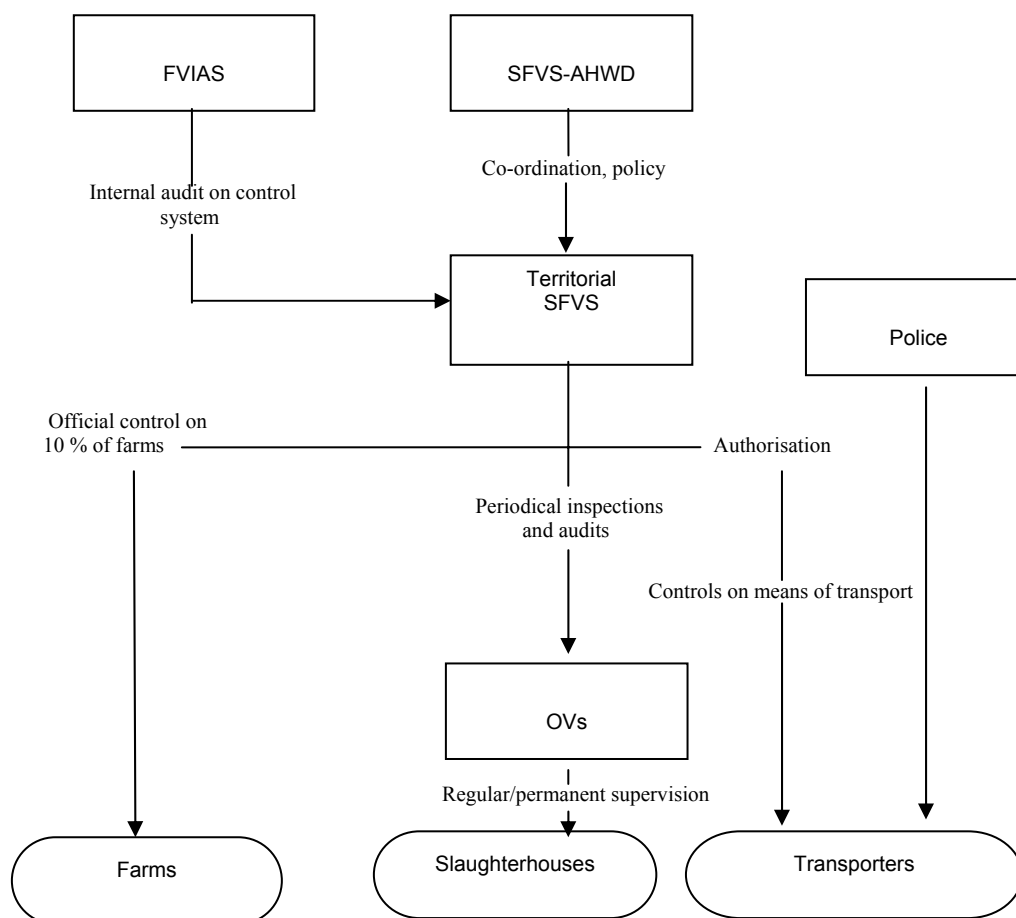
Soil contaminated with obsolete pesticides will be packed into 1m³ bags marked with codes UN X or Y. The filled bags will be weighed, put on pallets, fixed with a polyethylene or metal band. Each container will be marked in accordance with the ADR requirements and labelled.

Obsolete pesticides and contaminated soil, of which the contamination level exceeds 50 ppm, will be disposed of in the incinerator of SAVA GmbH &CO in Germany within 24 hours of delivery. Contaminated soil, of which the contamination level is lower than 50 ppm, will be buried in the SAD Knapsack burial site.

Laboratory services

The National Food and Veterinary Risk Assessment Institute (NFVRAI) performs pesticide residue analysis in food of plant origin. This is the only laboratory in Lithuania involved in the national programme for monitoring pesticides. Three chemists and two technicians are involved in pesticide residue analysis.

2.10 Control system for animal welfare



FVIAS Food and Veterinary Internal Audit Service
OV Official Veterinarian
SFVS-AHWD State Food and Veterinary Service Animal Health and Welfare Department

Competent Authorities

The CCA for animal health and welfare is the State Food and Veterinary Service (SFVS).

Responsibilities for animal welfare have been assigned since August 2006 to the Animal Health and Welfare Department. One of the officials of the department has been designated as the contact point required by Article 24(2) of Regulation (EC) No. 1/05. This official is responsible for the exchange of information regarding transport with other MS.

At central level, the department has three specialised animal welfare officers. It is responsible for ensuring that animal health and welfare inspections on farms are carried out in a uniform way throughout the country. At territorial level, operating instructions are available via the internet site www.vmyt.lt.

In 2009, there were 7,051 animal welfare controls carried out in holdings, 392 in slaughterhouses and 3,224 on means of transport.

Auditing is carried out by the Food and Veterinary Internal Audit Service.

Official controls on farm, during transport and at slaughter

An annual control plan is prepared by the Animal Health and Welfare Department. Based on this plan the territorial services develop a more detailed inspection plan.

Inspection protocols and uniform checklists for the control of animal health and welfare are published as SOPs, which are instructions within the quality management system of the SFVS.

On farm

Inspections on farms are conducted by official veterinarians working in the territorial services. These inspections may take place on an ad hoc basis or as part of the visits to farms foreseen for other purposes like animal health, animal identification and use of VMPS.

The target frequency is 10% of farms every year. The farms are selected on a risk basis taking into account the data registered in the CDB (the animal species, number of animals, density of the animals on the farm, housing system, mechanical or automatic equipment, animal health status, mortality, movements and intensity of movements, results of official controls, violation of the animal welfare legislation and the nature of the violation).

There is now a register for laying hen holdings (which includes the data referred in the Annex to Directive 2002/4/EC) available on www.vmvt.lt.

During transport

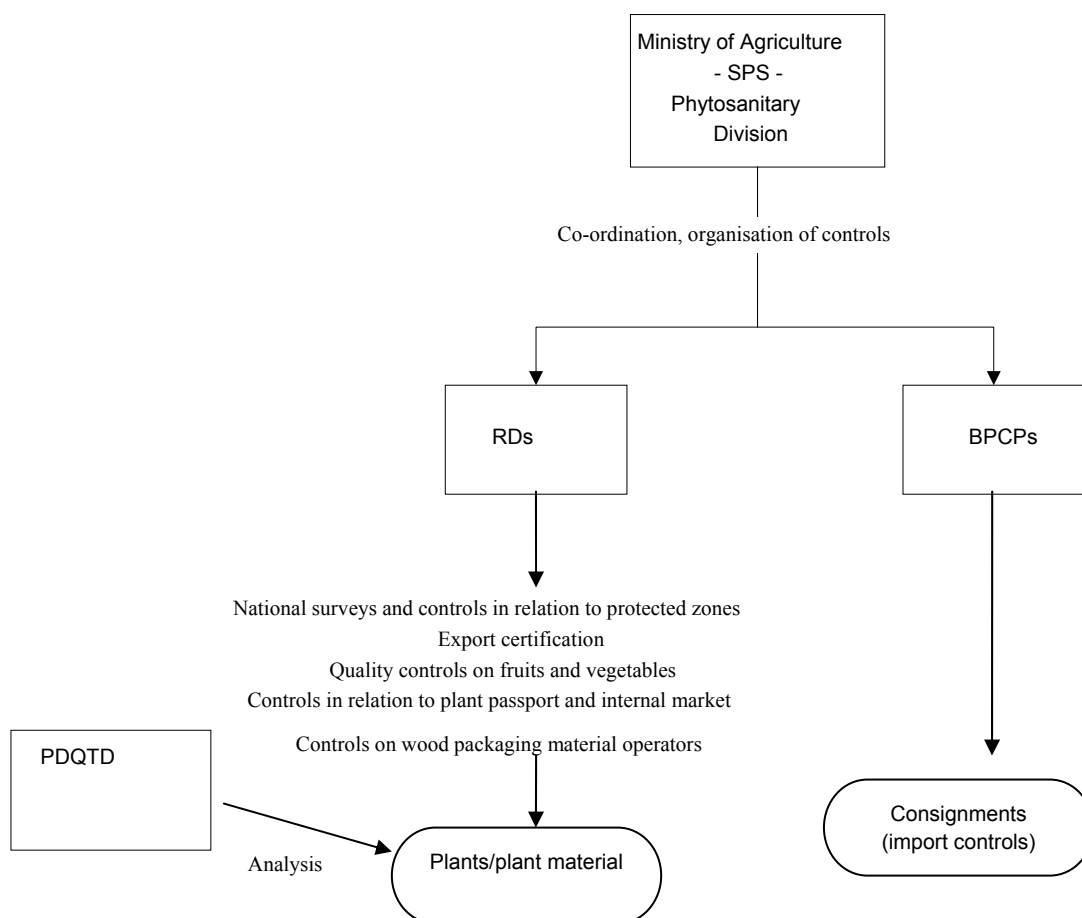
Controls on means of transport are carried out by official veterinarians working in the territorial services with the assistance of the Police, or at point of destination by official veterinarians supervising slaughterhouses.

Approval of vehicles is done at territorial level.

At slaughter

Controls at slaughter are carried out by official veterinarians supervising the slaughterhouse and by inspectors from the territorial services through inspections and audits.

2.11 Control system for plant health



- BPCPs** Border Phytosanitary Control Post
PDQTD Phytosanitary Diagnostic and Quality Testing Division
RD Regional Division
SPS State Plant Service under the Ministry of Agriculture

Competent Authorities

The CCA for plant health is the State Plant Service under the Ministry of Agriculture (SPS). The Phytosanitary Division has a co-ordinating role for all phytosanitary matters i.e. national surveillance programmes, protected zones, plant passport system, phytosanitary register, import and export controls. It is also responsible for organising controls on mandatory requirements for fruits and vegetables and on GMOs at import.

Implementation of controls is carried out by inspectors working in 10 Regional Divisions and 8 BPCPs.

The Phytosanitary Division prepares an annual working plan for the RDs and the BPCPs. In accordance with the plan, reports are submitted to the Phytosanitary Division every quarter. An overall report is prepared and published annually.

National surveys and protected zones

National surveys are carried for 23 quarantine organisms, and 4 potato viruses for the certification of seed potatoes. Testing for potato quality viruses has recently been introduced following the building in 2004 of a new phytosanitary greenhouse.

Lithuania has protected zone status against Fireblight (*Erwinia amylovora*). In 2009, during the survey for Fireblight at the most suitable time, 401 points were inspected, 177 samples were taken and analysed in the Phytosanitary Diagnostic and Quality Testing Division and 1 new outbreak site was identified. The outbreak site is located in the buffer zone of the outbreak site identified in 2007 (approximately 2 km away from the outbreak). Currently 4 outbreak sites for Fireblight are under the quarantine regime in Lithuania (less than 2 years old). The measures imposed in the event of an outbreak include eradication of contaminated host trees within a radius of ten metres around the contaminated trees in the nurseries, and in under-size orchards and eradication of contaminated host trees within a radius of 20 metres around contaminated trees in orchards. The zones around the outbreak are divided into: outbreak zone, safety zone of 1 km radius around the outbreak, buffer zone of 3 km radius around the safety zone.

Plant passport system and internal market controls

Plant passports are issued by the SPS or directly by registered operators after authorisation from the SPS. In 2009, about 69,600 plant passports were issued by the SPS and 82 were issued by registered operators, who are authorised to issue plant passports themselves.

The Phytosanitary Division is responsible for maintaining the register of phytosanitary operators. As of 26 October 2010, there were 2,881 registered operators (1,679 growers in open areas, 343 growers in greenhouses, 1,062 importers, 17 importers for scientific purposes, and 758 storage and processing companies).

Import controls

There are eight Border Phytosanitary Control Posts: six bordering Belarus, one bordering the Russian Federation, and one at the International harbour.

A new BPCP in Kena has been built and an appropriate railway structure is still under construction. At the moment, documentary and conformity inspections are performed in Kena; in cases when samples have to be taken, consignments are directed to the access ramp of the Kena BPCP.

Each BPCP has a specific co-operation agreement with customs as part of a general agreement between SPS and customs. All BPCP are open 24 hours a day, 7 days a week (except Raigardas, which works from 8 a.m. to 8 p.m. and allows only wood to be imported).

In 2009, there were 11,414 phytosanitary checks of imported plants and plant products. Two non-conforming consignments were identified by BPCP staffs, which were returned to the country of origin.

Quality controls of fresh fruit and vegetables

All lots of imported fresh fruit and vegetables are subject to quality controls either at the border, at customs storages or at the place of destination under customs supervision. Controls at internal market level are based on risk analysis and carried out on traders, wholesalers and growers or by special mobile groups during transportation.

In 2009, there were 7,029 quality checks on fresh fruit and vegetables imported, exported or supplied to the internal market (118,378 tonnes of production). The majority of checks were on consignments imported from third countries. The majority of non-compliant consignments were due to quality problem (e.g. rotting).

Controls on wood packaging material

The SPS is the body responsible for implementing ISPM 15 (International Standards for Phytosanitary Measures – Publication No 15) and for the control of wood packaging material. In Lithuania, currently there are 55 operators working according to, the ISPM 15 measure. In 2009, there were 43 operators and 111 inspections of those operators.

During import, SPS inspectors checked 1,100,523 units of wood products and 13,499,624 m³ units of wood.

Laboratory services

The Phytosanitary Diagnostic Subdivision (PDS) based in Vilnius, is a sub department of the Phytosanitary and Quality Diagnostic Division of the SPS. It provides full diagnostic and scientific support to the SPS. It is responsible for conducting phytosanitary testing of imported plants and plants of domestic origin, plant products, soil and other objects, as well as for training and instructing staff of the SPS carrying out testing for quality and quarantine organisms for certified seed potatoes, and carrying out research and development on plant health related issues.

In 2009, the Phytosanitary Diagnostic Subdivision performed 398 tests on imported products and 23,669 tests on plant products from the domestic market. Out of 164 tests identifying quarantine organisms, almost all were linked to products from the domestic market (159).

The majority of infested samples were from the potato growing sector. 25 samples (447 tonnes of seed and ware potatoes) were infested with potato ring rot *Clavibacter michiganensis* spp. *sededonicus*, 116 samples (6,178 ha fields for growing potatoes) were infested with Golden potato cyst nematode – *Globodera rostochiensis*, and 4 samples (10.5 tonnes of seed and ware potatoes) were infested with Potato stem nematode - *Ditylenchus destructor*.

Only 1 sample was infested with Fireblight - *Erwinia amylovora*.

The Phytosanitary Diagnostic Subdivision has started to establish a Quality Assurance System with a view to obtaining an accreditation for the testing of potato ring rot and brown rot in 2011.

There are no private laboratories involved in phytosanitary testing in Lithuania, although the Institute of Botany provides electron microscopy facilities for virology and the Institute of Ecology provides pheromone and light traps.

ANNEX I - STAFF RESOURCES ¹

Number of Control Staff in Lithuania

Summary Table

FVIAS	19
NFVRAI	274
County, City and District services	1,300
BIPs (are included in the County and City SFVS structure)	133
Total territorial SFVS and subordinate institutions	1,592
SFVS headquarter	103
SFVS total	1,695
SPSMA headquarters and other divisions	48
PPPRD	11
PPPCD	39
PDQTD	41
PD	11
RDs	64
BPCPs	41
SPSMA total	255
Overall total	1,950

Note: All staff numbers are recorded as *full-time equivalents*

¹ Statistics on control staff have been provided by Lithuania on a non-standardised basis.

ANNEX II – ACRONYMS, ABBREVIATIONS AND SPECIAL TERMS

ACRONYM	DESCRIPTION
AI	Avian Influenza
AHWD	Animal Health and Welfare Department
AIRBDC	Agriculture Information and Rural Business Development Centre
APB	Animal By-Products
BIP	Border Inspection Post
BPCP	Border Phytosanitary Control Post
BSE	Bovine Spongiform Encephalopathy
CA	Competent Authority
CCA	Central Competent Authority
CDB	Central Data Base
CFVS	County State Food and Veterinary Service
CRL	Community Reference Laboratory
CSF	Classical Swine Fever
DFVS	District State Food and Veterinary Service
DG SANCO	Directorate General for Health and Consumer Protection
EA	European Co-operation for Accreditation
EU	European Union
FMD	Foot and Mouth Disease
FVIAS	Food and Veterinary Internal Audit Service under SFVS
FVO	Food and Veterinary Office
FVS	Food and Veterinary Service
GMO	Genetically Modified Organism
GHP	General Hygiene Practice
GAB	German Accreditation Body
HACCP	Hazard Analysis Critical Control Point
ISPM	International Standards for Phytosanitary Measures
IAD	Internal Audit Department
LSIVP	Lithuanian State Inspection of Veterinary Preparations
LTL	Lithuanian litas
MA	Ministry of Agriculture
MH	Ministry of Health
MEN	Ministry of Environment

ACRONYM	DESCRIPTION
MEC	Ministry of Economy
MI	Ministry of Interior
MF	Ministry of Finance
MJ	Ministry of Justice
MLA	Agreement signed between the EA accreditation body members
MRL	Maximum Residue Limits
MS	Member State
ND	Newcastle Disease
NFVRAI	National Food & Veterinary Risk Assessment Institute
NNC	National Nutrition Centre
NRCP	National Residue Control Plan
NRL	National Reference Laboratory
OIE	Office International Des Epizooties
OV	Official Veterinarian
PPPCD	Plant Protection Products Control Division
PPPRD	Plant Protection Products Registration Division
PPP	Plant Protection Products
PD	Phytosanitary Division
PDQTD	Phytosanitary Diagnostic and Quality Testing Division
PDS	Phytosanitary Diagnostic Subdivision
LA	Lithuanian National Accreditation Bureau
QMS	Quality Management System
RASFF	Rapid Alert System for Food & Feed
RD	Regional Division
SOP	Standard Operating Procedure
SPS	State Plant Service
SVD	Swine Vesicular Disease
SFVS	State Food and Veterinary Service
TSEs	Transmissible Spongiform Encephalopathy
VMP	Veterinary Medicinal Products
FD	Sanitary Veterinary and Food department